



THE  
MACRO  
SHOW

## DISCLAIMER

This content has been prepared by Hedgeye Risk Management, LLC (“Hedgeye”) and is presented for informational purposes only. Hedgeye is not a broker dealer and does not provide investment advice to individuals. None of the information contained herein constitutes an offer to sell, or a solicitation of an offer to buy any security or investment vehicle, nor does it constitute an investment recommendation or legal, tax, accounting, or investment advice by Hedgeye or any of its employees, officers, agents, or guests. This information is presented without regard for individual investment preferences or risk parameters and is general, non-tailored, non-specific information. This content is based on information from sources believed to be reliable. Hedgeye is not responsible for errors, inaccuracies, or omissions of information. The opinions and conclusions contained in this report are those of the individual expressing those opinions or conclusions and are intended solely for the use of Hedgeye’s subscribers and the authorized recipients of the content. The opinions of HedgeyeTV guests are not the opinions of Hedgeye. Hedgeye is not responsible for the opinions of their guests or the content or information they may provide.

Hedgeye distributes content on behalf of Tier 1 Alpha, LLC, a third-party content provider with shared ownership.

All investments entail a certain degree of risk and financial instrument prices can fluctuate based on several factors, including those not considered in the preparation of the content. Consult your financial professional before investing.

## TERMS OF USE

The information contained herein is protected by United States and foreign copyright laws and is intended solely for the use of its authorized recipient; there is a fee associated with access to this report. Access must be provided directly by Hedgeye. **Redistribution or republication of the content is strictly prohibited.** By joining this call or possessing these materials, you agree to these terms and Hedgeye Terms of Service. For more detail, please refer to the Terms of Service at [https://www.hedgeye.com/terms\\_of\\_service](https://www.hedgeye.com/terms_of_service)



# TOP 3 THINGS



# Top 3 Things

1

INDIA



2

OIL



3

QQQ





# 1 INDIA

If I had feelings, I'd "feel" that India printing a rocket ship #acceleration to +8.4% GDP was bullish! Post its recent consolidation, WHEN it was time to gross up your Asset Allocation to what's been our fav Global Equity Market since June of 2023, the BSE Sensex launched +1.6% overnight to make a new all-time high for us (Longs: INDA, SMIN).

## 2 OIL

Big Similar Sets are happening now as both Chinese Stocks and Oil confirm their recent @Hedgeye TREND Breakout Signals with the @Hedgeye Risk Range™ Signals printing #BHLs (big-higher-lows) for both today (alongside UST Bond Yields). With WTI +1.4% to new 3-month highs, it's all signaling the same thing, inflation reaccelerating.



## 3 QQQ

Like India's Stock Market, finally delivered us the ATH (all-time high) yesterday with the NASDAQ Comp Index closing at 16,091 vs. its longstanding prior of 16,057 from all the way back when The Cycle Peaked in NOV of 2021! Critically, #NazVol (NASDAQ Volatility = VXN) broke @Hedgeye TRADE support of 17.99 on front month too.

# OUR PROCESS

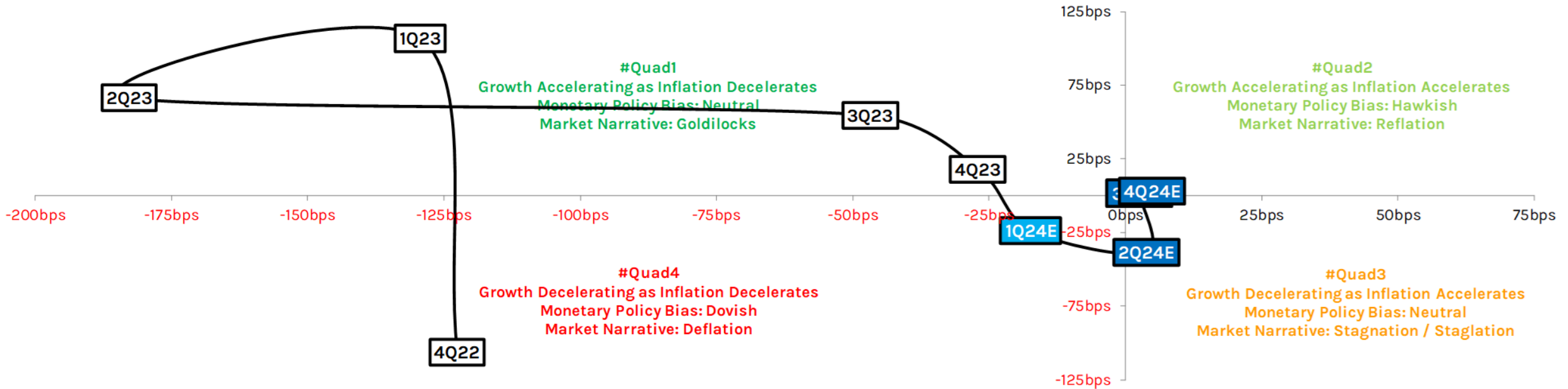


# What Are The Quads?

Our GIP Model is a quantitatively oriented, regime-based framework that helps investors proactively prepare for volatility phase transitions within and across asset classes by triangulating the three factors that matter most to Macro Risk Management – i.e. GROWTH, INFLATION, and POLICY.

United States	1Q21	2Q21	3Q21	4Q21	1Q22	2Q22	3Q22	4Q22	1Q23	2Q23	3Q23	4Q23	← Actuals   Estimates →	1Q24E	2Q24E	3Q24E	4Q24E
Real GDP QoQ SAAR	5.20%	6.20%	3.30%	7.00%	-2.00%	-0.60%	2.70%	2.60%	2.20%	2.10%	4.90%	3.30%	Real GDP QoQ SAAR	1.31%	0.54%	4.93%	3.41%
Real GDP YoY	1.57%	11.95%	4.74%	5.42%	3.57%	1.87%	1.71%	0.65%	1.72%	2.38%	2.93%	3.11%	Real GDP YoY	2.87%	2.48%	2.50%	2.53%
2yr Comparative Base Effects	1.54%	-2.69%	0.60%	1.05%	1.40%	2.21%	1.63%	2.17%	2.57%	6.91%	3.22%	3.04%	2yr Comparative Base Effects	2.64%	2.13%	2.32%	1.88%
Headline CPI YoY	1.90%	4.85%	5.34%	6.69%	7.96%	8.63%	8.33%	7.10%	5.81%	3.98%	3.51%	3.24%	Headline CPI YoY	3.07%	3.11%	3.13%	3.18%
2yr Comparative Base Effects	1.88%	1.09%	1.49%	1.64%	2.01%	2.61%	3.28%	3.96%	4.93%	6.74%	6.83%	6.90%	2yr Comparative Base Effects	6.89%	6.31%	5.92%	5.17%

## United States



◆ x-axis: First Difference of YoY Headline CPI;  
 y-axis: First Difference of YoY Real GDP

Data Source: BEA, BLS Light Blue box = Hedgeye Nowcast Model estimate. Dark Blue boxes = Hedgeye Comparative Base Effects Model estimates.

© Hedgeye Risk Management

Updated: 2/26/2023

# Highest/Lowest Expected Values By Quad Regime

## Quad 1: Goldilocks

### Best Asset Classes:

Equities, Credit, Commodities, FX

### Worst Asset Classes:

Fixed Income, USD

### Best Equity Sectors:

Tech, Consumer Discretionary, Materials, Industrials, Telecom

### Worst Equity Sectors:

Utilities, REITS, Consumer Staples, Financials, Energy

### Best Equity Style Factors:

High Beta, Momentum, Leverage, Secular Growth, Mid Caps

### Worst Equity Style Factors:

Low Beta, Defensives, Value, Dividend Yield, Small Caps

### Best Fixed Income Sectors:

BDCs, Convertibles, HY Credit, EM \$ Debt, Leveraged Loans

### Worst Fixed Income Sectors:

TIPS, Short Duration Treasuries, MBS, Treasury Belly, Long Bond

## Quad 2: Reflation

### Best Asset Classes:

Commodities, Equities, Credit, FX

### Worst Asset Classes:

Fixed Income, USD

### Best Equity Sectors:

Tech, Consumer Discretionary, Industrials, Energy, Financials

### Worst Equity Sectors:

Telecom, Utilities, REITS, Consumer Staples, Health Care

### Best Equity Style Factors:

Secular Growth, High Beta, Small Caps, Cyclical Growth, Momentum

### Worst Equity Style Factors:

Low Beta, Dividend Yield, Value, Defensives, Size

### Best Fixed Income Sectors:

Convertibles, BDCs, Preferreds, Leveraged Loans, HY Credit

### Worst Fixed Income Sectors:

Long Bond, Treasury Belly, Munis, MBS, IG Credit

## Quad 3: Stagflation

### Best Asset Classes:

Gold, Commodities, Fixed Income

### Worst Asset Classes:

Credit

### Best Equity Sectors:

Utilities, Tech, Energy, Industrials, Consumer Discretionary

### Worst Equity Sectors:

Financials, REITS, Materials, Telecom, Consumer Staples

### Best Equity Style Factors:

Secular Growth, Momentum, Mid Caps, Low Beta, Quality

### Worst Equity Style Factors:

Small Caps, Dividend Yield, Value, Defensives, Size

### Best Fixed Income Sectors:

Munis, EM \$ Debt, Long Bond, TIPS, Treasury Belly

### Worst Fixed Income Sectors:

BDCs, Preferreds, Convertibles, Leveraged Loans, HY Credit

## Quad 4: Deflation

### Best Asset Classes:

Fixed Income, Gold, USD

### Worst Asset Classes:

Commodities, Equities, Credit, FX

### Best Equity Sectors:

Consumer Staples, Utilities, REITS, Health Care, Telecom

### Worst Equity Sectors:

Energy, Tech, Industrials, Financials, Materials

### Best Equity Style Factors:

Low Beta, Dividend Yield, Quality, Defensives, Value

### Worst Equity Style Factors:

High Beta, Momentum, Leverage, Secular Growth, Cyclical Growth

### Best Fixed Income Sectors:

Long Bond, Treasury Belly, IG Credit, Munis, MBS

### Worst Fixed Income Sectors:

Preferreds, EM Local Currency, BDCs, Leveraged Loans, TIPS



# Position Sizing

Dynamic Asset Allocation	Max Position Size
Foreign Currency	12%
Fixed Income	10%
Equities	6%
Commodities	4%
Options	1-2%

Long-Short Equity Allocation	Long	Short
Maximum	6%	3%
	4%	2%
Minimum	2%	1%

- Build incrementally to max position (max/min based on volatility)
- Establish minimum position size for each asset class
- **Multiple positions within an asset class (ex. Bullish on four different Fixed Income assets, meaning at max could be 40% of capital)**

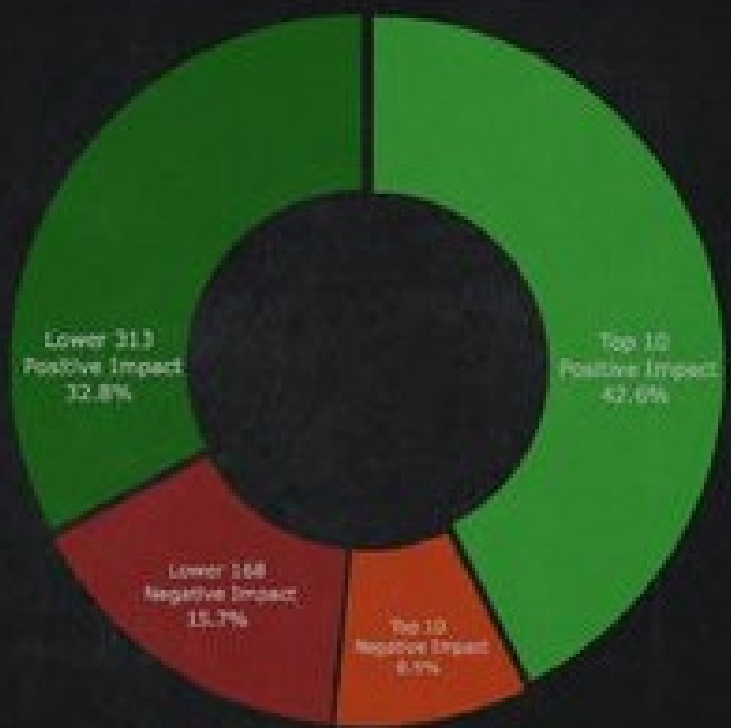
- Same basic principles as “Dynamic Asset Allocation” with...
- Long positions should always be larger than shorts
- Dynamics of Macro vs. Earnings Season (outside of Earnings season the sector & factor exposures determined by the Macro environment matter more than your long-term fundamental call on a company)

# CHART CALLOUTS



# Tier1 Alpha Charts of the Day

## Impact By Market Cap



## Top Positive Impact

Top Gainer	Daily %Return	Positive Impact	% Weight
MSFT	1.50%	9.51%	7.14%
NVDA	2.22%	8.34%	4.24%
AMZN	2.10%	7.07%	3.65%
AMD	9.19%	5.54%	0.68%
META	1.29%	2.92%	2.54%
GOOGL	1.50%	2.66%	2.0%
GOOG	1.69%	2.54%	1.7%
CRM	3.18%	1.89%	0.67%
JPM	0.98%	1.07%	1.23%
AVGO	0.92%	1.07%	1.31%

## Top Negative Impact

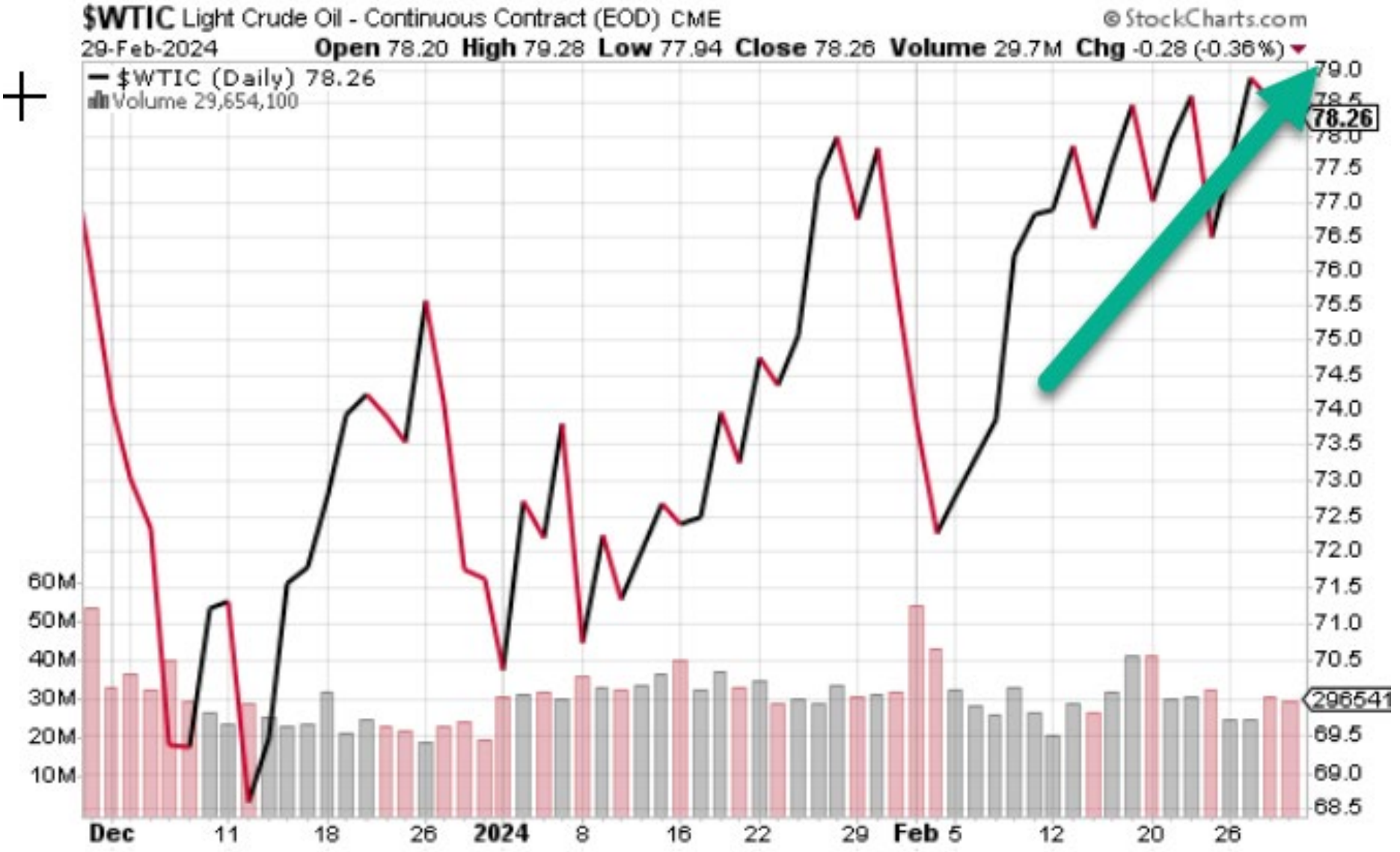
Top Decliner	Daily %Return	Negative Impact	% Weight
AAPL	-0.35%	-1.97%	6.36%
V	-1.09%	-1.02%	1.06%
UNH	-0.96%	-0.97%	1.14%
WMT	-1.71%	-0.86%	0.57%
BRK.B	-0.56%	-0.86%	1.74%
ABBV	-1.12%	-0.73%	0.74%
MA	-0.81%	-0.68%	0.92%
XEL	-8.70%	-0.62%	0.08%
LLY	-0.48%	-0.61%	1.43%
PFE	-1.77%	-0.58%	0.37%

# India





# Light Crude Oil




# Uranium

<b>Uranium</b>	95.0000	▼ 6.9500	-6.82%	-7.95%	-10.38%
USD/Lbs					



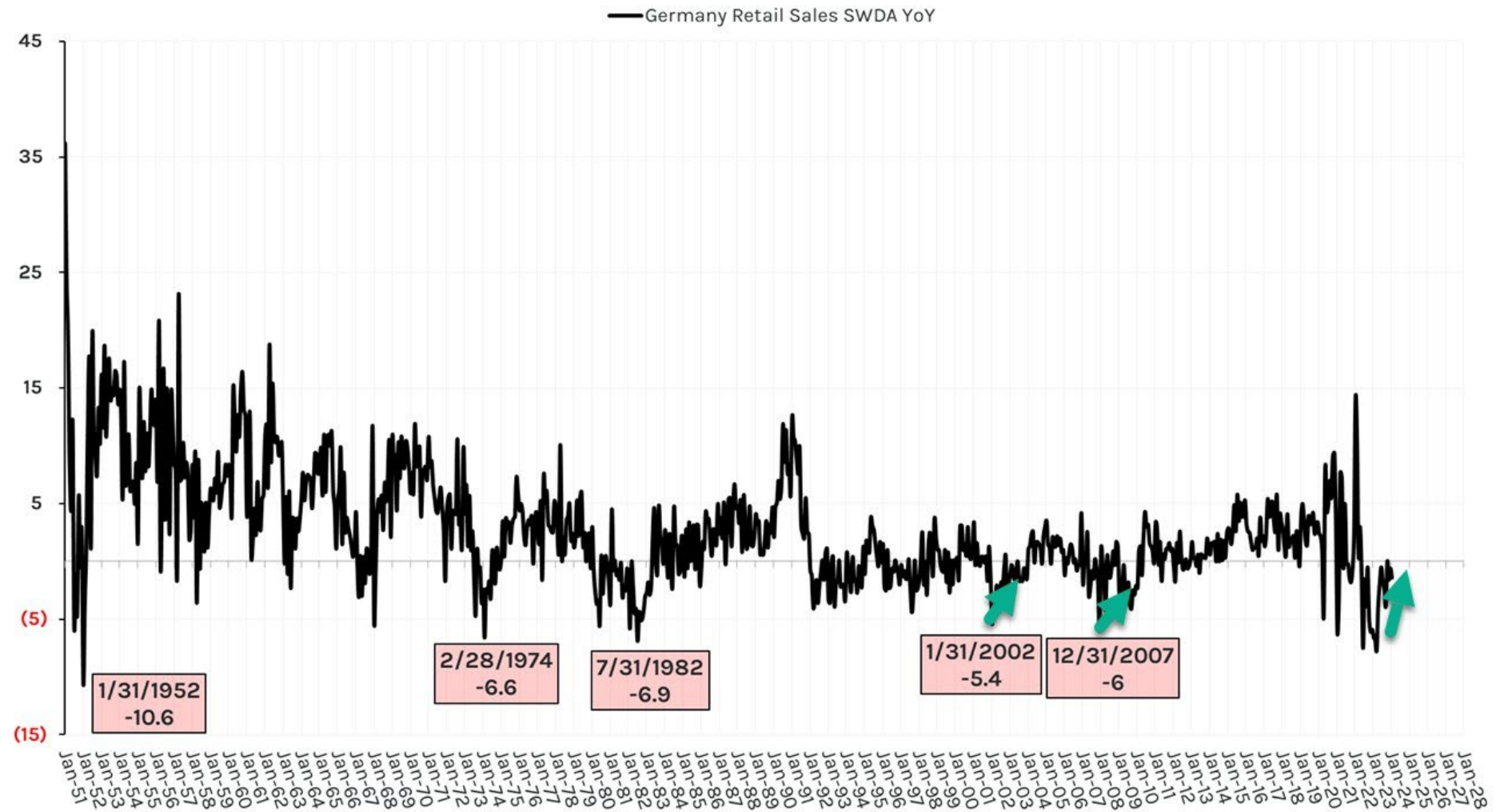
# Inflation in Commodities

Agricultural	Price	Day	%	Weekly	Monthly	YoY
<b>Butter</b> EUR/T	5930.00	▲ 365.00	6.56%	6.37%	8.15%	21.64%
<b>Cocoa</b> USD/T	6466.00	▲ 86.00	1.35%	4.81%	34.57%	128.40%



# German Retail Sales

### Germany Retail Sales Remains Negative At -1.4% YoY





# New Product Sneak Preview...

Pole Position	Ticker	Company	Sector Head	Date Added	Date Added	Current Price	Total Return %
1	CELH	Celsius Holdings, Inc.	Daniel Biolsi	1/22/2024	\$52.66	\$81.62	55.0%
2	GLASF	Glass House Brands Inc	Howard Penney	1/22/2024	\$5.60	\$6.95	24.1%
3	BYON	Beyond, Inc.	Brian McGough	2/22/2024	\$27.40	\$33.53	22.4%

# MACRO GRIND

# Sector Performance

<u>SECTOR</u>	<u>Ticker</u>	<u>Price</u>	<u>1-Day %</u> <u>Chg</u>	<u>MTD %</u> <u>Chg</u>	<u>QTD %</u> <u>Chg</u>	<u>YTD %</u> <u>Chg</u>
Consumer Discretionary	XLY	\$184.41	0.68%	0.00%	3.13%	3.13%
Financial Select Sector	XLF	\$40.34	-0.05%	0.00%	7.29%	7.29%
Health Care Select Sector	XLV	\$144.82	-0.82%	0.00%	6.19%	6.19%
Technology Select Sector	XLK	\$206.98	1.11%	0.00%	7.53%	7.53%
Consumer Staples Select Sector	XLP	\$74.45	-0.16%	0.00%	3.36%	3.36%
Industrial Select Sector	XLI	\$121.00	0.31%	0.00%	6.15%	6.15%
Materials Select Sector	XLB	\$87.56	0.76%	0.00%	2.36%	2.36%
The Energy Select Sector	XLE	\$86.14	0.49%	0.00%	2.74%	2.74%
Utilities Select Sector	XLU	\$62.10	0.03%	0.00%	-1.94%	-1.94%
Real Estate Select Sector	XLRE	\$39.11	0.80%	0.00%	-2.37%	-2.37%
Communications Services Sector	XLC	\$79.36	0.89%	0.00%	9.22%	9.22%
<b>S&amp;P 500</b>	<b>SPX</b>	<b>5,096.27</b>	<b>0.52%</b>	<b>0.00%</b>	<b>6.84%</b>	<b>6.84%</b>



# Sector Relative Performance

	<u>Ticker</u>	<u>Price</u>	<u>1-Day %</u> <u>Chg</u>	<u>MTD %</u> <u>Chg</u>	<u>QTD %</u> <u>Chg</u>	<u>YTD %</u> <u>Chg</u>
Consumer Discretionary	XLY	\$184.41	0.15%	0.00%	-3.71%	-3.71%
Financial Select Sector	XLF	\$40.34	-0.57%	0.00%	0.44%	0.44%
Health Care Select Sector	XLV	\$144.82	-1.34%	0.00%	-0.66%	-0.66%
Technology Select Sector	XLK	\$206.98	0.59%	0.00%	0.69%	0.69%
Consumer Staples Select Sector	XLP	\$74.45	-0.68%	0.00%	-3.48%	-3.48%
Industrial Select Sector	XLI	\$121.00	-0.22%	0.00%	-0.69%	-0.69%
Materials Select Sector	XLB	\$87.56	0.24%	0.00%	-4.48%	-4.48%
The Energy Select Sector	XLE	\$86.14	-0.03%	0.00%	-4.10%	-4.10%
Utilities Select Sector	XLU	\$62.10	-0.49%	0.00%	-8.79%	-8.79%
Real Estate Select Sector	XLRE	\$39.11	0.28%	0.00%	-9.22%	-9.22%
Communications Services Sector	XLC	\$79.36	0.37%	0.00%	2.38%	2.38%

# Market Share Volume & Total Value Traded

<u>INDEX/SECURITY</u>	<b>VOLUME: 2/29 vs.</b>			
	<u>Prior Day</u>	<u>1M Ave</u>	<u>3M ave</u>	<u>1Y Ave</u>
Total Market Volume*	24%	6%	9%	20%
Total Exchange Volume**	24%	20%	19%	28%



\*Total Market Volume = Total US exchange volume plus OTC and OTCBB trading volume for all security types. Calculated by Bloomberg.

\*\*Tape A+B+C volume = total US exchange volume

\*\*\* Total Traded Value for Russell 3000 (total mkt proxy)

# Style Factor Performance

	FACTOR	1D % Chg	1W % Chg	1M % Chg	3M % Chg	6M % Chg	YTD % Chg
Debt	High Debt/EV	1.0%	1.4%	1.2%	7.7%	5.5%	-0.5%
	Low Debt/EV	0.4%	1.6%	5.1%	12.8%	13.1%	5.5%
SI	High Short Interest	0.8%	1.7%	3.2%	12.0%	5.9%	1.4%
	Low Short Interest	0.0%	1.8%	4.9%	11.3%	13.9%	6.8%
BETA	High Beta	1.1%	2.4%	6.3%	17.2%	14.2%	4.6%
	Low Beta	0.0%	1.0%	1.8%	4.3%	5.6%	2.3%
YIELD	High Yield	0.8%	0.7%	-0.1%	3.4%	-0.4%	-3.2%
	Low Yield	0.6%	2.3%	5.9%	15.4%	13.4%	5.9%
MKT CAP	MCAP Bottom 25%	0.9%	0.9%	2.4%	8.5%	2.3%	-0.8%
	MCAP Top 25%	0.2%	1.5%	4.0%	12.0%	15.0%	6.4%
Sales	Top 25% Sales Growth	0.8%	1.9%	5.7%	13.2%	13.9%	5.3%
	Bottom 25% Sales Growth	0.7%	1.8%	1.6%	5.5%	2.9%	-0.3%
EPS	Top 25% EPS Growth	1.1%	1.3%	4.8%	11.7%	9.5%	2.4%
	Bottom 25% EPS Growth	0.5%	1.7%	1.5%	5.1%	3.2%	0.4%

*\*Mean Performance of Top Quartile vs. Bottom Quartile, S&P500 Companies*



# Key \$USD Correlations

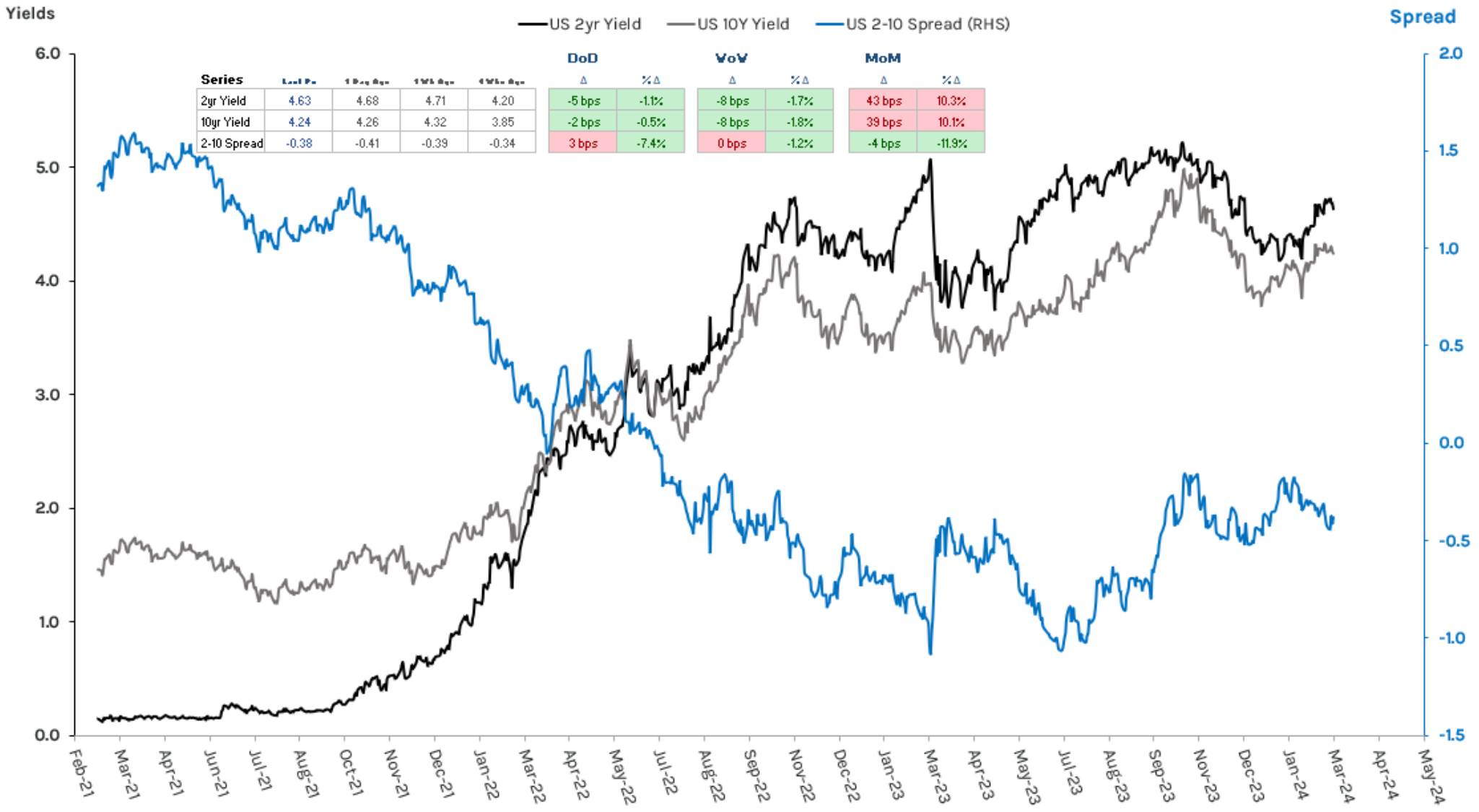
## Key \$USD Correlations\*

\*Days = Trading Days

## 52-Wk Rolling 30D Correlation

METRIC	15D	30D	90D	120D	180D	High	Low	% Time Pos	% Time Neg
SPX	-0.64	0.57	-0.54	-0.69	-0.37	0.83	-0.93	25%	75%
BRENT Oil	0.16	0.28	0.67	0.73	0.60	0.89	-0.83	55%	45%
CRB Index	-0.43	0.24	0.72	0.73	0.53	0.85	-0.84	44%	56%
GOLD	-0.83	-0.53	-0.76	-0.79	-0.36	0.46	-0.94	9%	91%
Bitcoin	-0.29	0.51	-0.36	-0.63	-0.14	0.70	-0.90	19%	81%

# U.S. Treasury Yield Curve



# CFTC Non-Commercial Net Long Positioning (Updated weekly)

## CFTC NON-COMMERCIAL NET LONG POSITIONING

	METRIC	Latest	W/W Chg	3M Ave	6M Ave	1Y Ave	3Y		Z-Score	
							Max	Min	1Y	3Y
EQUITIES	SPX (Index + E-mini)	(220,337)	(18,694)	(168,577)	(126,571)	(194,318)	248,601	(447,046)	-0.24X	-0.95X
	VIX	(39,071)	11,895	(47,125)	(40,036)	(47,543)	(13,979)	(139,038)	0.57X	1.08X
	Russell 2000 (mini)	(23,671)	483	(19,294)	(39,806)	(49,500)	21,422	(120,386)	1.13X	1.02X
	Dow Jones (mini)	16,731	(3,638)	12,247	(7,581)	(11,862)	24,410	(37,076)	1.58X	2.28X
	Nasdaq (mini)	28,775	(4,942)	28,833	19,681	12,602	41,791	(24,622)	1.05X	1.35X
	Nikkei Index	(3,720)	(332)	(3,096)	(2,189)	(2,794)	2,324	(9,401)	-0.49X	-0.30X
RATES	10Y UST	(683,550)	63,079	(720,302)	(705,115)	(702,613)	238,882	(870,838)	0.22X	-1.11X
	2Y UST	(1,114,920)	76,367	(1,273,073)	(1,297,353)	(1,072,965)	86,786	(1,476,201)	-0.14X	-1.32X
	5Y UST	(1,279,563)	56,309	(1,305,037)	(1,262,733)	(1,117,875)	117,022	(1,506,938)	-0.70X	-1.59X
	UST Bonds	(86,845)	19,087	(122,690)	(145,077)	(136,720)	49,853	(229,064)	1.21X	0.15X
	30D Fed Funds	(162,530)	(20,549)	(128,857)	(161,176)	(152,424)	147,168	(320,917)	-0.16X	-0.73X
CURRENCIES	USD	1,509	(456)	5,936	10,669	10,795	44,971	(10,137)	-1.44X	-1.39X
	JPY	(122,856)	(8,074)	(84,412)	(96,792)	(90,974)	12,444	(129,984)	-1.47X	-1.79X
	EUR	70,211	19,863	108,059	104,868	137,704	198,934	(47,358)	-1.69X	-0.11X
	GBP	44,907	(3,745)	22,756	11,655	14,611	66,045	(79,646)	1.06X	1.54X
	AUD	(81,966)	(2,391)	(57,773)	(68,608)	(56,752)	11,168	(98,824)	-1.41X	-1.26X
	CAD	(2,432)	4,963	(26,266)	(36,997)	(33,567)	50,344	(72,137)	1.38X	0.30X
	MXN	95,929	(4,525)	83,707	68,924	68,001	100,454	(64,080)	1.04X	1.71X
	NZD	6,626	3,219	(4,132)	(8,512)	(5,209)	17,126	(21,272)	1.74X	1.04X
CHF	(11,236)	(3,629)	(9,023)	(11,160)	(7,980)	13,895	(20,263)	-0.59X	-0.55X	
COMMODITIES	CRUDE OIL	209,149	15,484	203,660	263,161	249,523	594,465	170,119	-0.69X	-1.22X
	GOLD	64,348	17,948	103,226	82,784	92,850	175,694	(41,300)	-0.71X	-0.32X
	COPPER	(17,646)	15,929	(9,881)	(13,249)	(13,026)	66,522	(35,712)	-0.39X	-0.90X
	Natural Gas	(158,153)	(17,807)	(105,025)	(96,795)	(110,196)	17,500	(182,100)	-1.67X	-1.04X
	RBOB Gasoline	63,285	(2,954)	69,554	58,024	54,637	76,197	27,945	0.75X	1.21X
	ULSD Heating Oil	19,096	(2,113)	26,332	31,181	24,196	43,514	(14,002)	-0.46X	0.06X
	Silver	19,375	12,031	23,230	20,880	19,877	54,034	(12,811)	-0.05X	-0.28X
	Platinum	8,298	7,681	13,312	9,894	12,784	32,928	(8,246)	-0.48X	-0.42X
	Corn	(274,738)	(17,414)	(195,255)	(152,517)	(68,664)	526,059	(274,738)	-1.94X	-2.19X
	Soybeans	(153,468)	1,063	(56,809)	(5,759)	44,911	214,132	(155,559)	-2.41X	-3.38X
	Wheat	(46,046)	(14,803)	(48,909)	(61,308)	(65,284)	42,229	(107,489)	0.87X	-0.65X
	Live Cattle	78,449	9,877	47,810	73,201	99,799	144,819	30,899	-0.58X	-0.25X
	Lean Hogs	62,841	16,522	15,582	18,471	8,788	101,947	(29,164)	2.26X	0.56X
	Sugar	70,315	(8,553)	71,535	139,417	172,151	301,889	(9,197)	-1.54X	-1.41X
	Cotton	97,442	13,172	31,902	37,126	24,897	127,919	(13,367)	2.73X	1.16X
Coffee	53,560	(4,429)	47,415	23,079	17,699	72,005	(37,467)	1.45X	0.83X	
Cocoa	39,319	(3,580)	60,146	67,099	64,511	86,695	(32,129)	-1.90X	0.36X	
Orange Juice	2,041	739	1,546	2,435	3,181	6,673	(2,109)	-0.97X	-0.55X	



# VOLATILITY

# Implied & Realized Volatility

TIME WINDOW SETTING:  
VOLATILITY\_30D  
PUT\_IMP\_VOL\_30D

TICKER	TOTAL RETURN PERFORMANCE YTD %	IVOL PREMIUM/DISCOUNT IVOL PREM %				REALIZED VOLATILITY TRENDS				IMPLIED VOLATILITY TRENDS		
		IVOL / RVOL	Yesterday	1W Ago	1M Ago	TTM Z-Score	3Yr Z-Score	MM %	PERCENTILE 10YR	MM %	PERCENTILE 10YR	
<b>US EQUITIES</b>												
SPDR S&P 500 ETF Trust	SPY	6.89%	18%	23%	26%	25%	-1.2	-0.5	6%	46%	0%	16%
Power Shares QQQ Trust ETF	QQQ	7.20%	11%	18%	20%	14%	-1.2	-0.4	8%	51%	5%	35%
I-Shares Russell 2000 ETF	IWM	1.50%	-5%	-4%	-4%	12%	-0.9	-1.0	14%	78%	-3%	60%
Materials Sector SPDR ETF	XLB	2.36%	66%	-37%	17%	85%	0.7	1.0	25%	46%	12%	79%
Communication Services SPDR ETF	XLC	9.22%	-22%	-24%	-12%	15%	-1.3	-1.1	43%	51%	-3%	14%
Energy Sector SPDR ETF	XLE	2.74%	25%	25%	14%	29%	0.5	0.7	-12%	21%	-15%	27%
Financials Sector SPDR ETF	XLF	7.29%	52%	50%	48%	64%	0.6	1.0	0%	12%	-7%	23%
Industrials Sector SPDR ETF	XLI	6.15%	48%	63%	17%	25%	0.6	0.8	-14%	21%	1%	53%
Technology Sector SPDR ETF	XLK	7.53%	-13%	-20%	-19%	-1%	-1.1	-0.8	-1%	58%	-14%	41%
Consumer Staples Sector SPDR ETF	XLP	3.36%	91%	50%	0%	-6%	1.8	1.2	-9%	50%	85%	89%
Real Estate Sector SPDR ETF	XLRE	-2.37%	-2%	4%	-1%	8%	-0.3	-0.4	6%	56%	-4%	52%
Utilities Sector SPDR ETF	XLU	-1.94%	5%	-36%	-15%	-8%	0.0	-0.4	11%	73%	28%	75%
Health Care Sector SPDR ETF	XLV	6.19%	103%	21%	38%	30%	3.0	3.4	-8%	15%	43%	81%
Consumer Discretionary Sector SPDR ETF	XLX	3.13%	-3%	-4%	-3%	-8%	-0.6	-0.4	1%	55%	6%	50%
Retail SPDR ETF	XRT	5.77%	139%	12%	18%	30%	3.3	4.2	-2%	54%	80%	87%
<b>INTERNATIONAL EQUITIES</b>												
I-Shares MSCI Emerging Markets ETF	EEM	-0.55%	-2%	4%	-9%	-27%	-0.3	-0.4	-26%	19%	-1%	5%
Euro Stoxx 50 Index	SX5E Index	7.88%	6%	7%	-5%	4%	-0.2	-0.1	-9%	13%	-7%	7%
I-Shares China Large-Cap ETF	FXI	-2.54%	-15%	-16%	-9%	-16%	-1.3	-0.8	-3%	86%	-1%	74%
I-Shares MSCI Japan ETF	EWJ	7.76%	38%	38%	27%	4%	2.1	2.1	-31%	17%	-9%	35%
<b>CURRENCIES</b>												
PowerShares US Dollar Index ETF	UUP	3.69%	1098%	121%	189%	86%	9.5	15.4	-14%	14%	455%	100%
Currency Shares Euro Trust ETF	FXE	-2.32%	40%	-36%	34%	29%	1.2	1.5	-25%	10%	-18%	30%
Currency Shares British Pound ETF	FXB	-1.25%	18%	23%	6%	2%	1.0	0.9	-28%	5%	-17%	4%
Currency Shares Japanese Yen ETF	FXJ	-6.12%	8%	3%	-5%	-2%	0.4	0.0	-23%	44%	-15%	42%
<b>COMMODITIES</b>												
SPDR Gold Shares ETF	GLD	-0.97%	21%	9%	5%	29%	0.6	0.4	-10%	8%	-15%	12%
United States Oil Fund ETF	USO	10.07%	27%	34%	26%	24%	0.4	0.2	-17%	25%	-16%	5%
United States Natural Gas Fund ETF	UNG	-18.44%	-3%	3%	-8%	-27%	0.8	0.8	-20%	81%	6%	48%
Teucrium Corn ETF	CORN	-9.32%	45%	41%	58%	38%	1.1	0.8	4%	23%	9%	39%
TEUCRIUM SOYBEAN FUND	SOYB	-11.28%	28%	25%	26%	51%	0.4	0.4	3%	33%	-12%	22%
VANECK STEEL ETF	SLX	-4.25%	32%	28%	38%	38%	0.4	0.8	14%	9%	9%	17%
<b>FIXED INCOME</b>												
I-Shares 20+ Year Treasury Bond ETF	TLT	-4.75%	-4%	-4%	-2%	17%	-0.2	-0.7	8%	67%	-11%	53%
I-Shares 7-10 Year Treasury Bond ETF	IEF	-2.25%	2%	7%	0%	33%	-0.2	-0.5	22%	79%	-6%	64%
I-Shares IBOXX IG Corporate Bond ETF	LQD	-3.07%	27%	27%	29%	44%	0.8	0.0	2%	71%	-10%	50%
I-Shares J.P. Morgan USD EM Bond ETF	EMB	-0.85%	-2%	13%	67%	23%	-0.8	-0.9	14%	72%	-9%	13%
I-Shares IBOXX HY Corporate Bond ETF	HYG	-0.64%	25%	15%	-10%	23%	1.0	0.6	0%	42%	2%	48%
<b>MEGA-CAP</b>												
Apple	AAPL	-6.12%	29%	28%	29%	28%	-0.2	0.3	-17%	19%	-16%	17%
Amazon	AMZN	16.34%	-7%	-6%	-5%	67%	-0.8	-0.5	49%	56%	-16%	40%
Alphabet	GOOGL	-0.88%	-20%	-19%	-13%	-12%	-1.1	-1.0	14%	77%	4%	53%
Facebook	META	38.47%	-46%	-44%	-45%	87%	-1.7	-1.5	176%	92%	-20%	46%
Microsoft	MSFT	10.00%	19%	18%	17%	48%	-0.1	0.1	27%	37%	2%	39%
Tesla	TSLA	-18.75%	-14%	-13%	-11%	-10%	-1.1	-0.9	8%	59%	2%	27%

Data Source: CBOE, CME

# Bond Volatility (MOVE Index)



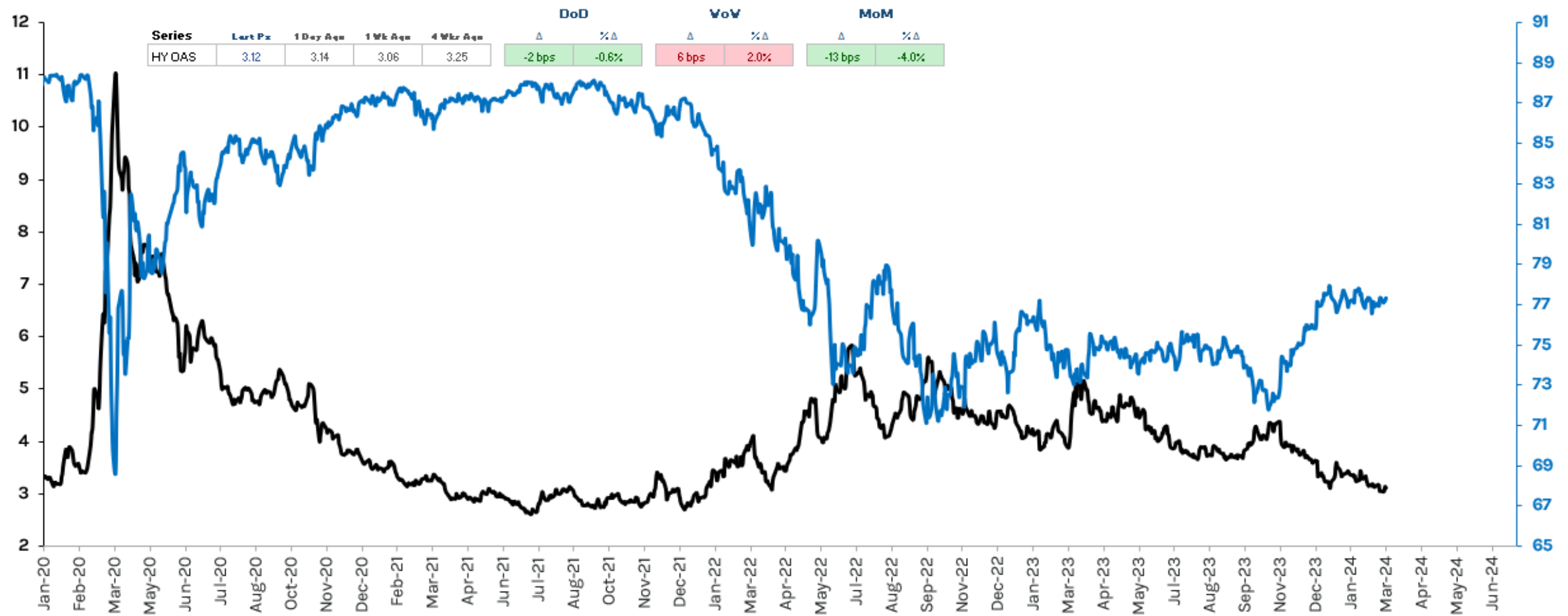


# High Yield Market Volatility

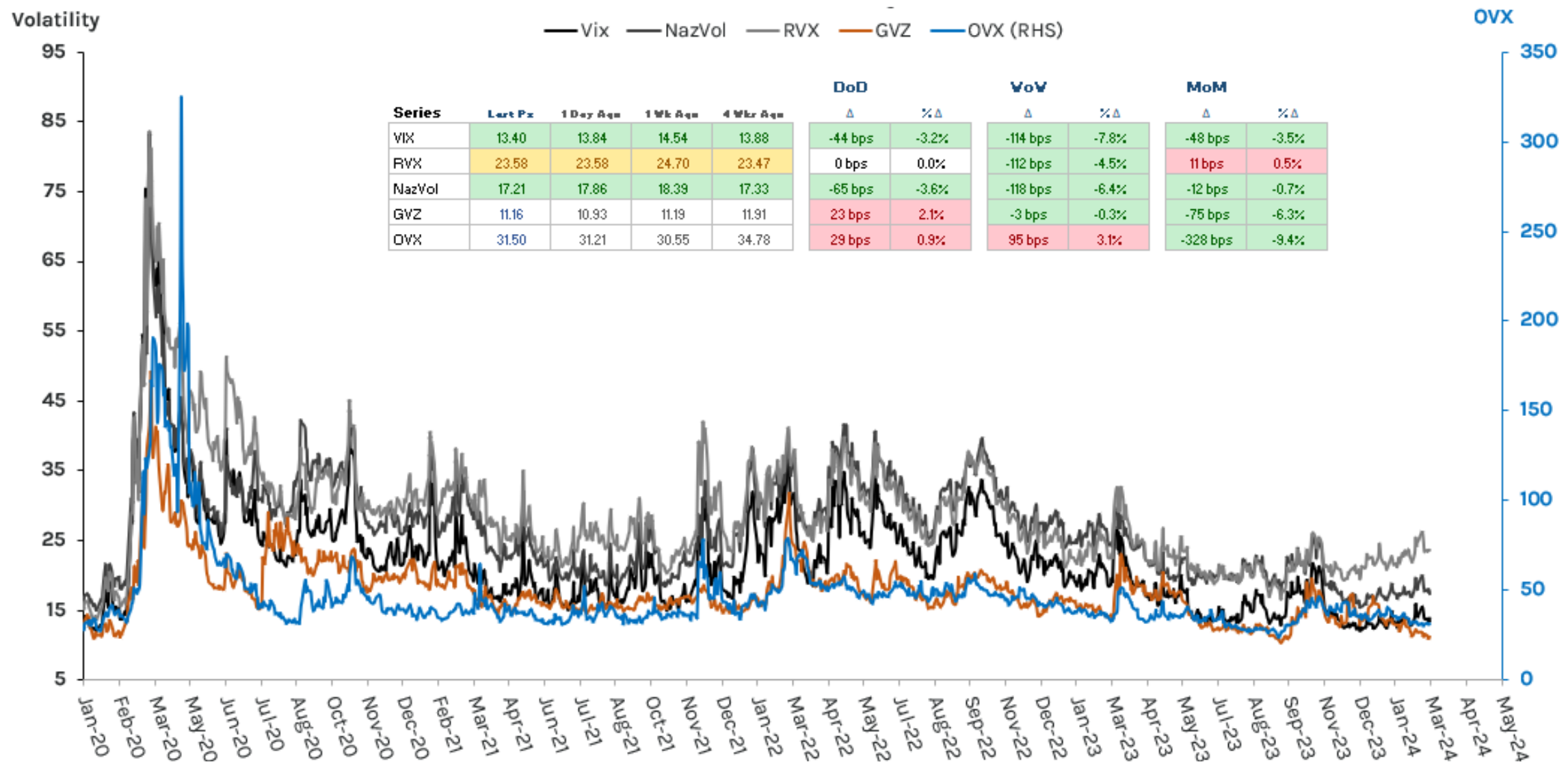
Volatility

— High Yield OAS      — High Yield (RHS)

\$HYG



# Macro Volatility



# Global Currency Volatility



# 10-Year BBB Corporate Spread





# HEDGEYE EVENTS

# COMING SOON ON HEDGEYE TV

FEBRUARY 26TH - MARCH 1ST

## ALL-ACCESS WEEK

Get access to 10 Hedgeye Products for FREE all week! Go to [Hedgeye.com](https://www.hedgeye.com) for more info

MARCH 5TH | 11:00AM ET

## REAL CONVERSATIONS

Hedgeye CEO Keith McCullough welcomes Prof. Steve Hanke for another Real Conversation

MARCH 10TH | 11:00AM ET

## MACRO PRO

JT Taylor, Emily Evans & Paul Glenchur discuss Washington Policy and its impact on Wall Street

MARCH 1ST | 12:30PM ET

## RETAIL PRO

Brian McGough welcomes Marcus Lemonis & Marc Cohodes to discuss \$BYON

MARCH 7TH | 12:00PM ET

## SUBSCRIBER ORIENTATION

Robert McGroarty & Matt Moran guide Hedgeye subscribers on how best to use their products

MARCH 19TH | 11:00AM ET

## REAL CONVERSATIONS

Hedgeye CEO Keith McCullough welcomes an exciting guest for another Real Conversation



# IN CASE YOU MISSED IT HEDGEYE TV

**FEBRUARY 29TH**

## **SUBSCRIBER ORIENTATION**

Robert McGroarty & Matt Moran guide Hedgeye subscribers on how best to use their products

**FEBRUARY 22ND**

## **THE PITCH**

6 analysts. 6 stock ideas. 60 minutes. Hosted by Hedgeye CEO Keith McCullough

**FEBRUARY 21ST**

## **HEDGEYE RISK MANAGER**

Hedgeye CEO Keith McCullough hosts a Macro Themes Coaching session for 1Q 2024

**FEBRUARY 28TH**

## **IN THE ARENA**

Daryl Jones welcomes Enrique Abeyta for another edition of "In The Arena"

**FEBRUARY 21ST**

## **DEMOGRAPHY UNPLUGGED**

Neil Howe hosts his monthly update on the latest recession indicator data

**FEBRUARY 15TH**

## **MACRO PRO**

JT Taylor and Col. Jeff Mcausland discuss geopolitics around the globe.