

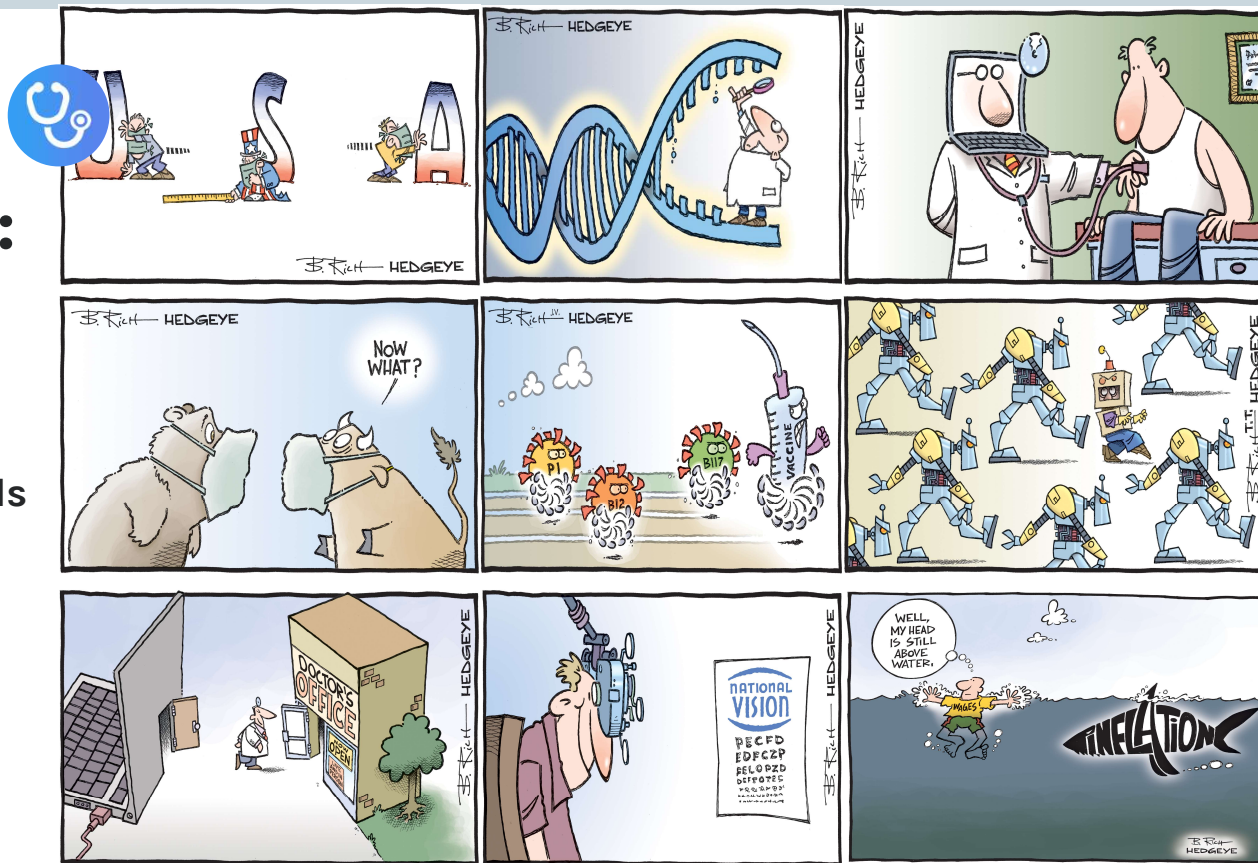
HEDGEYE

Hedgeye Health Care: Weekly Sector Distillation

MicroQuads & Estimate Revision Trends

For the week ending Oct. 22, 2021

October 25, 2021



Hedgeye Health Care

Tom Tobin, Managing
Director, Health Care
Ttobin@Hedgeye.com
@HedgeyeHC

William McMahon, Analyst,
Health Care
Wcmahon@Hedgeye.com
@HedgeyeMed

Justin Venneri, Director,
Primary Research
Jvenneri@hedgeye.com
@HedgeyeJVenneri

© Hedgeye Risk Management LLC.

DISCLAIMER

The preceding has been presented for informational purposes only. None of the information contained herein constitutes an offer to sell, or a solicitation of an offer to buy any security or investment vehicle, nor does it constitute an investment recommendation or legal, tax, accounting or investment advice by Hedgeye or any of its employees, officers, agents or guests. This information is presented without regard for individual investment preferences or risk parameters and is general, non-tailored, non-specific information. This content is based on information from sources believed to be reliable. Hedgeye is not responsible for errors, inaccuracies or omissions of information. The opinions and conclusions contained in this report are those of the individual expressing those opinions or conclusion and are intended solely for the use of Hedgeye's subscribers and the authorized recipients of the content. All investments entail a certain degree of risk and financial instrument prices can fluctuate based on several factors, including those not considered in the preparation of the content. Consult your financial professional before investing.

TERMS OF USE

The information contained herein is protected by United States and foreign copyright laws and is intended solely for the use of its authorized recipient. Access must be provided directly by Hedgeye.

Redistribution or republication is strictly prohibited. For more detail please refer to the Terms of Service at https://www.hedgeye.com/terms_of_service.

MICROQUAD RESULTS

While we have up to five (5) years of data on the securities in the MicroQuads model, not all securities in the model have five years of trading history, and while we make every effort to assure the accuracy of the data, we cannot guarantee its accuracy. The methodology used to arrive at the results displayed herein is proprietary to Hedgeye and involves aggregating the actual historical results for each security while it "resides" in the appropriate MicroQuad over the defined periods of time. These results do not include any consideration for trading costs, commissions, or other factors that could impact results, we make no representations or warranties that past results will or can be repeated, and the data have not been verified by a third-party.

PERFORMANCE MONITOR FORWARD/PROSPECTIVE PRICE CHANGES

The data for each security are based on historic price performance and average forward returns and are not a guarantee of future performance. We make every effort to assure the accuracy of the calculations and forecasts; however, we cannot guarantee their accuracy or that performance will be repeated.

Health Care Position Monitor

HEDGEYE

For Week of September 25, 2021

Best Ideas - Longs						Best Ideas - Shorts					
LONG		Price	Mkt Cap (\$B)	Trend	Tail	SHORT		Price	Mkt Cap (\$B)	Trend	Tail
Active Longs						Active Shorts					
NTRA	Natera, Inc.	\$ 114.81	\$10.8B	✓	✓	TDOC	Teladoc Health, Inc.	\$ 139.45	\$22.2B	×	×
AMN	AMN Healthcare Services, Inc.	\$ 97.14	\$4.6B	✓	✓	EXAS	Exact Sciences Corporation	\$ 92.57	\$15.9B	×	×
DGX	Quest Diagnostics Incorporated	\$ 144.36	\$17.7B	✓	✓	ARKG	ARK Genomic Revolution ETF	\$ 75.04	\$7.2B	×	×
EYE	National Vision Holdings, Inc.	\$ 61.16	\$5.0B	✓	✓						
ONEM	1Life Healthcare, Inc.	\$ 21.99	\$4.2B	✓	✓						
NEO	NeoGenomics, Inc.	\$ 45.24	\$5.6B	✓	✓						
DRIO	DarioHealth Corp.	\$ 15.68	\$0.3B	✓	✓						
BFLY	Butterfly Network, Inc. Class A	\$ 10.60	\$1.8B	✓	✓						
ATIP	ATI Physical Therapy, Inc. Class A	\$ 2.80	\$0.6B	✓	✓						
Long Bias						Short Bias					
GDRX	GoodRx Holdings, Inc. Class A	\$ 45.85	\$14.8B			AMWL	American Well Corporation Class A	\$ 8.86	\$1.9B		
TXG	10x Genomics Inc Class A	\$ 165.24	\$15.0B			UHS	Universal Health Services, Inc. Class B	\$ 135.00	\$10.2B		
NVTA	Invitae Corp.	\$ 27.95	\$6.1B			ACHC	Acadia Healthcare Company, Inc.	\$ 57.49	\$5.2B		
GH	Guardant Health, Inc.	\$ 113.63	\$11.5B			ME	23andMe Holding Co Class A	\$ 11.11	\$1.0B		

Note

Best Idea Longs/Shorts are high conviction ideas that we've either presented a Black Book for already or have one in the works (similar to other Hedgeye teams). Bias Ideas are ones in which we've done the bulk of the work, but there may be another question we need to answer to move it over the line. All active positions are higher conviction than bias ideas. We rank active versus active and bias versus bias.

Disclaimer

Hedgeye's "bias" represents Hedgeye's outlook on companies currently under Hedgeye's review, or for which timing is not right for greater coverage. Hedgeye may or may not provide further commentary on any or all companies represented on the bias and representation of a company on the bias does not forecast whether Hedgeye will or will not issue any additional material on that company.

MicroQuad Results Stats

HEDGEYE

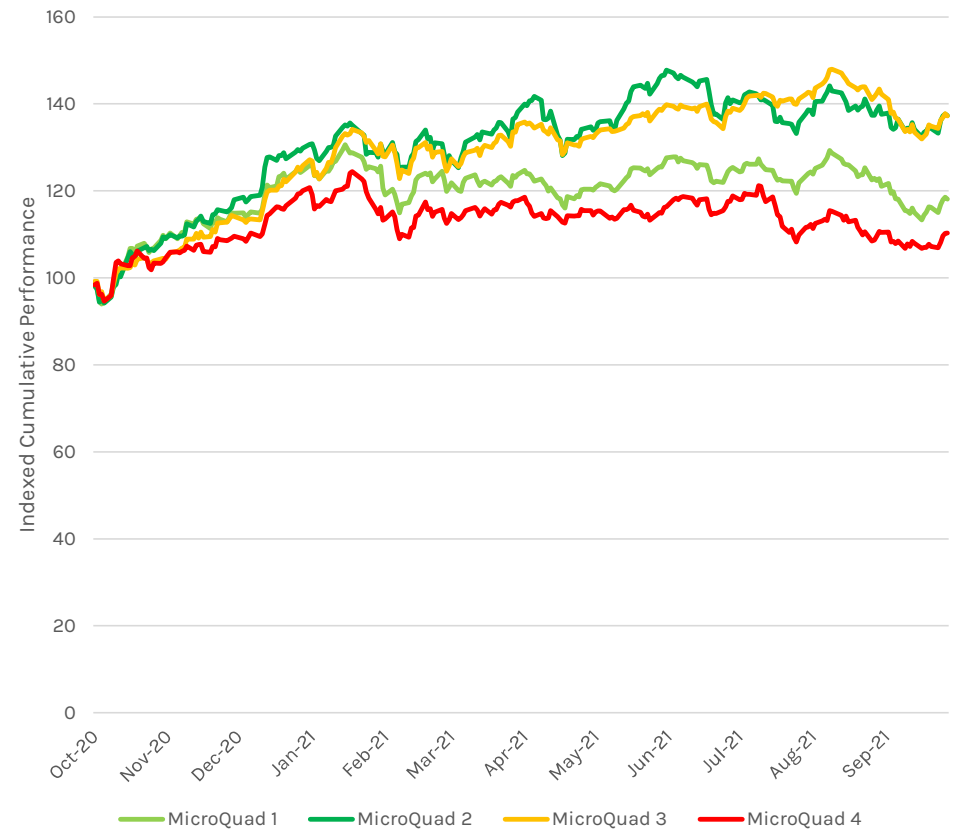
MicroQuad – Percentage Change

Average Performance (%)					
MicroQuad	1WK	1M	3M	6M	12M
1	3.15	-2.92	-8.23	-3.78	13.27
2	4.03	-0.28	-5.05	0.87	32.69
3	2.85	-5.04	-4.11	3.29	35.02
4	3.33	-0.16	-8.97	-3.47	7.43

Batting Average					
MicroQuad	1WK	1M	3M	6M	12M
1	0.338	0.393	0.450	0.476	0.491
2	0.293	0.388	0.456	0.479	0.499
3	0.336	0.405	0.470	0.498	0.519
4	0.344	0.409	0.430	0.458	0.488

Slugging Percentage					
MicroQuad	1WK	1M	3M	6M	12M
1	1.067	-1.146	-3.702	-1.800	6.522
2	1.181	-0.109	-2.300	0.416	16.310
3	0.956	-2.039	-1.932	1.641	18.170
4	1.144	-0.065	-3.855	-1.590	3.627

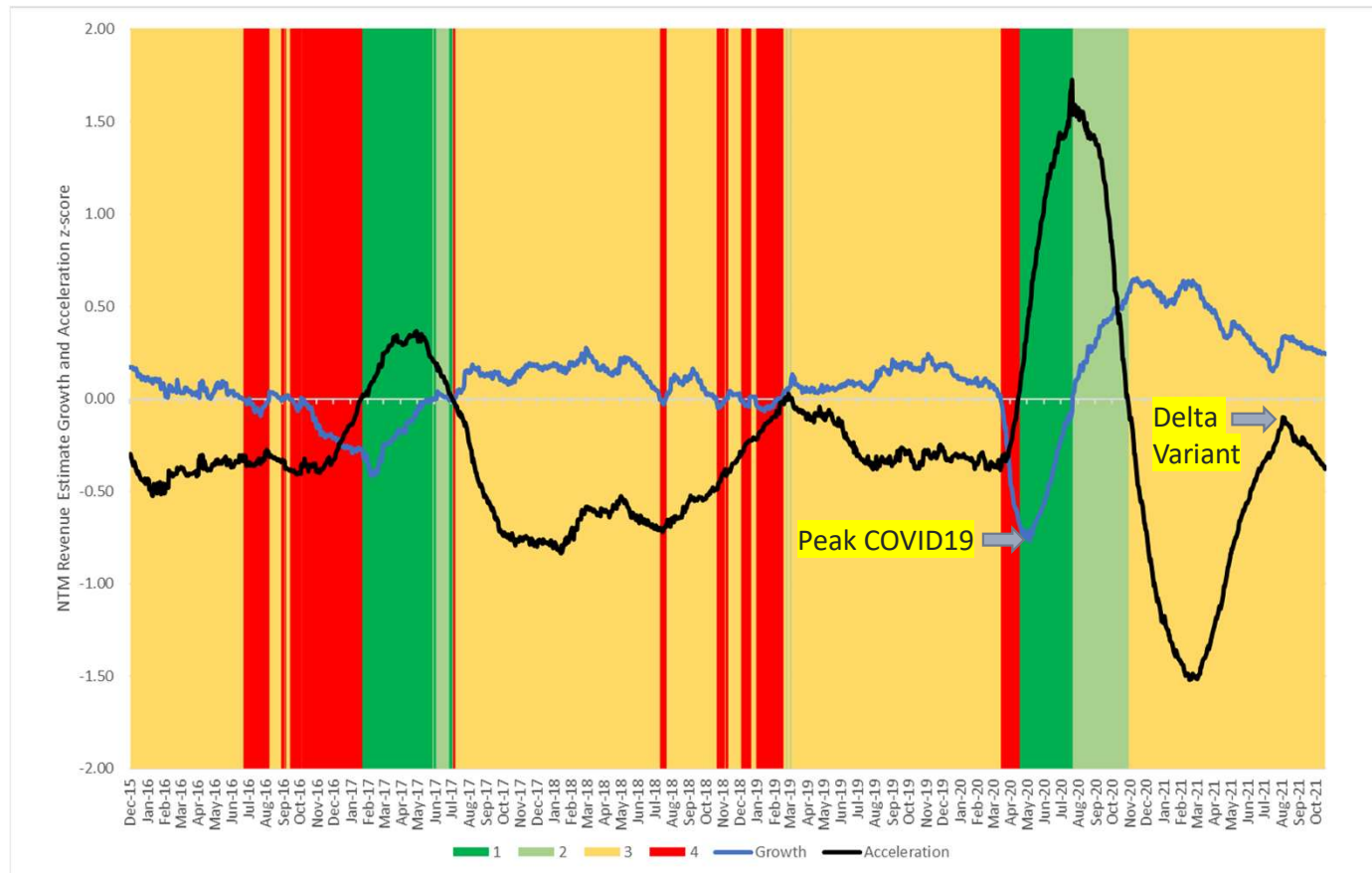
Percentage Change – 1Y Index by MicroQuad



Estimate Revision Trend | October 22, 2021

HEDGEYE

Revision trend rate of change continues its pull back heading into heart of 3Q21 prints...



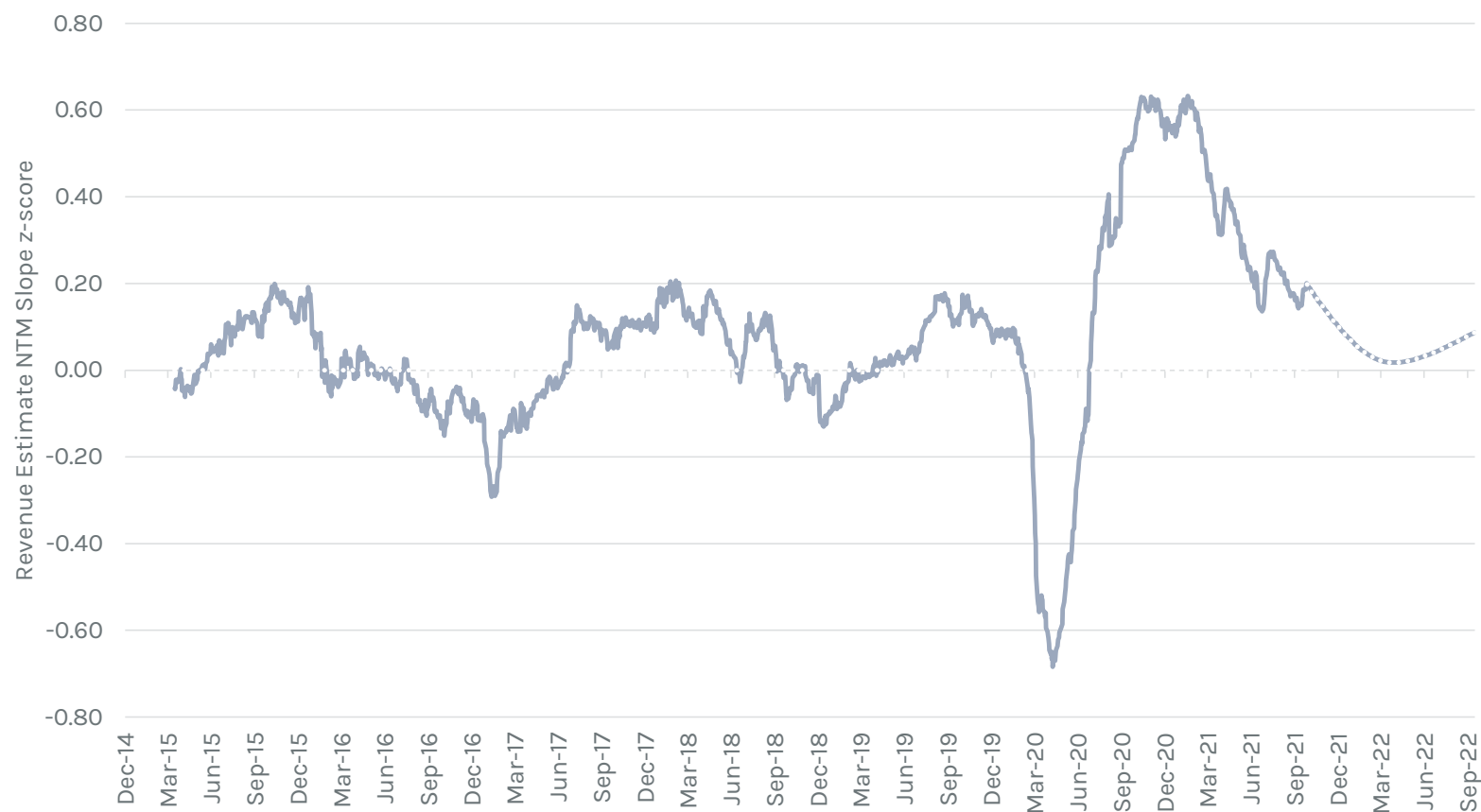
Data updated through 10/22/2021. The estimate trend slope has been fighting against the **Delta Variant** since late July 2021 and after finally turning positive against the COVID-comp during 2Q21 earnings season.

COVID cases are falling nationally and leaving fewer hot spots across the United States. We've seen only a modest impact to broad measures of medical utilization as Delta Variant ramped and fell over the third quarter. We are expecting a solid 3Q21 earnings season, and commentary on early 4Q trends should help too.

Estimate Trend | Down and then up again?

HEDGEYE

Will 3Q21 results mark a higher low? The forecast is presently saying so.



Consensus revenue estimates began to turn negative at the end of February 2021, coincident with the beginning of a slide in performance across our Health Care universe. The recovery since then has stalled.

Looking to 3Q21 results with delta waning could lead to positive commentary on 3Q earnings call.

Based on current readings, the trend won't bottom until 1Q22, but that will change if 2022 estimates are taken higher based on upcoming results.

MicroQuad Screen | Oct 22, 2021

Active Long	Active Short
Bench Long	Bench Short

HEDGEYE

MicroQuad1

ABT PKI
 AMED PRSC
 BAX QDEL
 BDX SYK
 DGX TDOC
 ENSG TMO
 EXAS AMGN
 FLGT
 GKOS
 HOLX
 MCK
 OPK

MicroQuad2

CERN PCRX
 CHNG PODD
 COO SGRY
 HAE TFX
 HRC TXG
 IART
 LHCG
 LLY
 MDT
 MRK
 NSTG
 OMCL

MicroQuad3

A EHC IQV RGEN
 ABC EYE ISRG RMD
 ABMD GH MEDP SEM
 ALGN GMED MMSI STAA
 ATRC HCA MOH STE
 BIO HCAT MTD TECH
 BSX HSKA NTRA TNDM
 CHE HUM NVTA TWST
 CNMD ICUI PEN UNH
 CRL IDXX PHR VEEV
 DHR ILMN Q WAT
 DXCM INOV RCM ZTS

MicroQuad4

ABBV
 AMN
 ANTM
 JNJ
 LH
 MASI
 MRNA
 NEO
 OPCH
 VRTX
 WST

MicroQuad 2 Screen

HEDGEYE

High multiple, high beta, small cap, large pull backs

Ticker	Name	Price	1W	1M	3M	EV	MCAP	Beta	Days to Cover	Sales Corr	Sales	EBITDA	EPS	J-21	A-21	S-21	O-21	N-21	D-21	J-22	F-22	M-22
CERN	Cerner Corporation	\$71.72	1.39	-3.38	-7.41	22,752	21,226	0.46	5.85	0.59	6,037	2,040	\$3.57	3	3	2	2	2	2	2	3	3
CHNG	Change Healthcare, Inc.	\$20.75	-0.62	-3.76	-7.20	11,585	6,590	0.29	12.01	0.57	3,560	1,096	\$1.61	2	2	2	2	2	2	2	2	3
COO	Cooper Companies, Inc.	\$401.30	-3.27	-9.83	-0.64	22,541	20,561	1.03	4.98	0.93	3,092	1,041	\$14.55	3	3	2	2	3	3	3	3	3
HAE	Haemonetics Corporation	\$70.76	3.34	4.77	17.31	4,266	3,657	0.39	4.06	0.54	1,028	281	\$2.89	3	2	2	2	2	2	2	3	3
HRC	Hill-Rom Holdings, Inc.	\$151.91	0.68	0.44	32.16	11,790	10,196	0.01	3.01	0.86	3,068	716	\$6.46	3	3	3	3	3	3	3	2	2
IART	Integra LifeSciences Holdings Corporation	\$67.20	-3.06	-2.99	-0.03	7,299	5,990	1.55	12.40	0.63	1,618	432	\$3.33	2	2	2	2	2	2	3	3	3
LHCG	LHC Group, Inc.	\$143.63	-1.09	-14.95	-29.30	4,678	4,612	0.69	3.89	0.79	2,397	319	\$6.80	2	2	2	2	2	2	3	3	3
LLY	Eli Lilly and Company	\$236.69	1.51	1.27	1.82	235,373	233,167	0.79	2.16	0.89	27,857	9,766	\$8.34	1	1	1	4	2	2	2	3	3
MDT	Medtronic Plc	\$124.80	-1.60	-5.20	-0.79	182,506	165,656	1.10	2.13	0.69	33,854	10,457	\$5.98	2	2	2	2	2	2	3	3	3
MRK	Merck & Co., Inc.	\$78.33	-4.41	7.58	0.40	224,161	205,421	0.46	1.41	0.78	51,783	22,014	\$6.55	1	1	1	4	2	2	3	3	3
NSTG	NanoString Technologies, Inc.	\$44.45	-4.00	-20.27	-22.83	1,983	2,140	0.82	6.10	0.90	177	-68	-\$2.21	2	2	2	2	2	2	2	3	3
OMCL	Omnicell, Inc.	\$157.81	-1.56	-0.93	4.60	7,799	7,273	0.75	11.51	0.95	1,236	275	\$4.04	3	2	2	2	2	2	3	3	3
PCRX	Pacira Biosciences, Inc.	\$53.84	10.74	-2.43	-2.64	2,301	2,339	1.59	18.76	0.72	623	260	\$3.67	2	2	3	3	3	3	3	3	3
PODD	Insulet Corporation	\$304.03	3.76	4.32	13.30	20,682	20,960	0.75	7.33	0.98	1,263	245	\$1.34	3	3	2	2	2	2	3	3	3
SGRY	Surgery Partners, Inc.	\$39.23	-5.61	-16.14	-32.20	6,831	3,590	1.34	4.45	0.53	2,376	356	\$0.29	3	3	4	2	2	2	3	3	3
TFX	Teleflex Incorporated	\$364.48	-2.54	-6.22	-6.62	19,907	17,621	1.16	3.51	0.93	2,955	921	\$14.23	2	2	2	2	2	2	2	3	3
TXG	10x Genomics Inc Class A	\$153.73	-0.19	-1.55	-10.19	17,452	14,862	0.64	5.38	0.90	639	8	-\$0.26	2	2	2	2	2	2	2	2	2

With a Macro Quad 2 backdrop, smaller market cap, high multiple, and high beta names that pulled back may look like good candidates for trading longs if the fundamentals check out (i.e., if rising estimates are warranted). We can see a lot of green looking out over coming months above, and we see NSTG coming back into the screen to join TXG on the tools side. PCRX also re-entered MQ2 from MQ3, perhaps as a direct result of the Flexion acquisition.

MicroQuad 3 Screen

Slowing, with some deteriorating further in 4Q21

MicroQuad 3														Sales MicroQuad								
Ticker	Name	Price	1W	1M	3M	EV	MCAP	Beta	Days to Cover	Sales Corr	Sales	EBITDA	EPS	J-21	A-21	S-21	O-21	N-21	D-21	J-22	F-22	M-22
A	Agilent Technologies, Inc.	\$152.59	-1.76	-12.20	2.46	49,955	47,821	1.32	1.92	0.92	6,739	1,904	\$4.77	3	3	3	3	3	4	4	1	1
ABC	AmerisourceBergen Corporation	\$120.11	1.30	-4.52	6.41	30,683	25,624	0.58	1.82	0.78	237,742	3,403	\$10.64	3	3	3	3	3	4	4	4	1
ABMD	ABIOMED, Inc.	\$345.07	1.40	-2.85	8.52	15,440	15,982	1.46	3.93	0.60	1,127	300	\$4.51	2	2	2	3	3	3	3	3	3
ALGN	Align Technology, Inc.	\$597.72	-9.63	-15.85	-2.99	46,041	46,661	1.30	2.76	0.89	4,596	1,391	\$12.77	3	3	3	3	3	3	3	3	3
ATRC	AtriCure, Inc.	\$71.38	-0.78	-4.66	-7.99	3,208	3,355	1.09	5.00	0.83	311	-5	-\$1.07	2	2	3	3	3	3	3	3	2
BIO	Bio-Rad Laboratories, Inc. Class A	\$720.11	-1.55	-8.86	6.72	21,772	22,429	0.89	2.85	0.93	2,829	635	\$13.64	4	3	3	3	4	4	4	4	1
BSX	Boston Scientific Corporation	\$43.25	-0.85	-3.91	2.73	70,859	63,846	1.50	3.70	0.90	12,782	3,634	\$1.81	2	2	3	3	3	3	3	4	2
CHE	Chemed Corporation	\$417.67	-0.67	-12.50	-11.52	7,299	7,089	0.52	2.57	0.98	2,209	466	\$19.40	1	4	3	3	4	4	4	1	1
CNMD	CONMED Corporation	\$139.13	0.82	8.42	7.74	5,426	4,261	1.13	7.86	0.93	1,101	231	\$3.65	2	2	2	3	3	3	3	3	3
CRL	Charles River Laboratories International, Inc.	\$405.84	-2.58	-7.72	5.55	24,402	21,197	1.64	1.32	0.90	3,902	1,016	\$11.35	3	3	3	3	4	4	4	1	1
DHR	Danaher Corporation	\$300.43	-0.72	-7.63	5.49	252,151	223,934	0.99	2.21	0.95	30,035	10,116	\$9.80	3	3	3	4	4	4	4	1	1
DXCM	DexCom, Inc.	\$554.51	2.84	0.51	23.58	55,739	54,815	1.13	5.92	0.96	2,810	544	\$3.27	1	2	3	3	3	3	4	4	1
EHC	Encompass Health Corporation	\$67.10	-6.00	-12.69	-15.70	10,815	7,030	0.43	2.73	0.83	5,511	1,105	\$4.54	3	3	3	3	3	3	3	2	2
EYE	National Vision Holdings, Inc.	\$59.42	2.20	0.78	19.90	6,417	4,954	1.50	11.48	0.53	2,204	288	\$1.37	2	2	2	3	3	3	3	3	3
GH	Guardant Health, Inc.	\$104.24	-6.59	-17.92	-11.35	10,684	11,077	0.07	6.43	0.80	474	-327	-\$3.34	2	3	3	3	3	2	2	2	2
GMED	Globus Medical Inc Class A	\$77.15	-1.41	-4.89	-3.45	7,815	6,258	1.43	2.48	0.89	1,022	362	\$2.18	2	2	2	3	3	3	3	4	3
HCA	HCA Healthcare Inc	\$242.51	0.09	-5.44	10.63	117,549	81,031	1.06	1.52	0.86	60,021	12,549	\$17.63	2	3	3	3	3	4	4	4	1
HCAT	Health Catalyst, Inc.	\$48.78	-0.14	-9.80	-11.58	2,223	2,590	1.58	10.46	0.84	279	-1	-\$0.39	-	2	3	3	3	3	3	3	2
HSKA	Heska Corporation	\$250.66	-5.69	-1.21	4.97	2,172	2,449	0.89	5.45	0.90	282	38	\$0.68	3	3	3	3	4	4	4	1	1
HUM	Humana Inc.	\$434.98	7.71	8.47	-7.63	63,551	59,350	0.95	2.55	0.89	90,727	4,750	\$23.89	1	2	3	3	3	4	4	4	4
CUI	ICU Medical, Inc.	\$234.12	0.88	-4.00	20.19	4,476	4,792	0.67	3.23	0.68	1,287	280	\$7.60	3	3	3	3	3	3	3	3	3
DXX	IDEXX Laboratories, Inc.	\$629.72	1.08	-4.83	-5.70	57,267	55,457	1.18	1.51	0.96	3,468	1,119	\$9.23	3	3	3	3	3	3	3	4	4
LMN	Illumina, Inc.	\$408.10	1.00	-9.29	-12.32	58,295	64,032	1.17	2.17	0.91	4,701	1,465	\$5.80	3	3	3	3	3	3	3	3	2
NOV	Inovalon Holdings, Inc. Class A	\$40.72	0.07	0.89	27.37	6,990	3,148	0.02	4.16	0.75	848	303	\$0.88	3	3	3	3	3	3	3	3	2
QV	IQVIA Holdings Inc	\$246.82	1.23	-4.54	-0.36	61,092	49,076	1.26	3.77	0.93	14,481	3,201	\$9.77	3	3	3	3	4	4	4	1	1
SRG	Intuitive Surgical, Inc.	\$330.95	-2.18	-68.35	-65.17	121,230	121,913	1.38	1.76	0.89	6,231	2,667	\$5.34	3	3	3	3	3	4	4	1	4
MEDP	Medpace Holdings, Inc.	\$186.61	-3.39	4.15	2.01	6,843	6,700	1.30	4.86	0.91	1,314	251	\$4.94	4	2	2	3	3	4	4	4	4

It's important to keep an eye on the forward forecast with MQ3 stocks. There's usually higher volatility and the batting average is lower with these stocks, but they are longs in the model portfolio.

MicroQuad 3 Screen Con't

HEDGEYE

Slowing, with some deteriorating further in 4Q21

MicroQuad 3														Sales MicroQuad								
Ticker	Name	Price	1W	1M	3M	EV	MCAP	Beta	Days to Cover	Sales Corr	Sales	EBITDA	EPS	J-00	J-00	J-00	J-00	J-00	J-00	J-00	J-00	J-00
MMSI	Merit Medical Systems, Inc.	\$71.09	-2.09	-1.80	18.58	4,441	4,068	0.59	6.96	0.55	1,110	231	\$2.34	1	2	3	3	3	3	3	3	2
MOH	Molina Healthcare, Inc.	\$280.04	1.05	5.23	8.91	15,141	17,397	1.06	3.59	0.87	28,667	1,437	\$16.05	3	3	3	3	3	4	4	4	4
MTD	Mettler-Toledo International Inc.	\$1,399.31	-0.36	-10.37	-3.43	36,084	33,976	1.58	3.48	0.90	3,803	1,156	\$35.44	3	3	3	3	4	4	4	1	1
NTRA	Natera, Inc.	\$113.37	-2.75	-5.71	0.22	9,928	10,778	1.55	8.05	0.94	725	-387	-\$4.52	3	3	3	3	3	3	4	4	1
NVTA	Invitae Corp.	\$27.73	4.37	-6.41	-2.63	7,595	6,083	1.88	8.65	0.84	633	-407	-\$2.49	2	2	2	3	3	3	3	3	3
PEN	Penumbra, Inc.	\$269.71	3.10	-6.64	6.09	10,370	10,206	1.01	10.69	0.91	827	90	\$1.42	3	3	3	3	3	3	3	3	2
PHR	Phreesia, Inc.	\$64.13	3.60	-7.22	0.88	2,915	3,362	1.33	2.88	0.89	229	-30	-\$1.48	-	3	3	3	3	3	3	3	2
Q	IQVIA Holdings Inc	\$246.82	1.23	-4.54	-0.36	61,092	49,076	1.26	3.77	0.93	14,481	3,201	\$9.77	3	3	3	3	4	4	4	1	1
RCM	R1 RCM Inc	\$22.71	-2.36	9.92	12.09	7,557	6,177	0.53	4.13	0.86	1,646	391	\$0.55	2	2	2	3	3	3	3	3	2
RGEN	Repligen Corporation	\$268.57	-1.32	-9.39	34.19	15,185	15,116	2.03	2.97	0.96	730	238	\$3.00	3	3	3	3	4	4	4	1	1
RMD	ResMed Inc.	\$254.62	-0.15	-12.33	0.56	39,674	38,978	0.71	1.67	0.96	3,852	1,323	\$6.46	2	2	3	3	3	4	4	4	1
SEM	Select Medical Holdings Corporation	\$32.40	-7.38	-6.49	-16.37	8,844	4,535	0.53	3.52	0.71	6,162	936	\$2.86	2	2	3	3	3	4	4	4	1
STAA	STAAR Surgical Company	\$114.37	-5.49	-19.57	-11.67	5,901	5,805	2.24	4.85	0.89	278	50	\$0.90	3	3	3	3	3	3	3	2	2
STE	STERIS Plc	\$224.19	3.16	4.29	7.94	24,528	23,474	1.23	1.96	0.77	4,840	1,357	\$8.23	3	3	3	3	4	4	4	1	1
TECH	Bio-Techne Corporation	\$497.85	1.93	-6.00	8.54	20,652	19,826	1.57	1.20	0.97	1,127	446	\$8.10	3	3	3	3	3	3	3	2	2
TNDM	Tandem Diabetes Care, Inc.	\$134.30	6.37	8.87	36.36	8,123	8,016	1.01	3.41	0.92	793	124	\$0.64	3	3	3	3	3	4	4	1	1
TWST	Twist Bioscience Corp.	\$114.49	14.02	1.36	2.12	5,293	5,787	1.39	8.00	0.84	175	-153	-\$3.18	-	3	3	3	3	3	3	2	2
JNH	UnitedHealth Group Incorporated	\$420.36	3.87	0.68	0.16	453,415	423,521	1.16	2.19	0.94	304,489	29,469	\$21.04	3	3	3	3	3	3	3	3	3
VEEV	Veeva Systems Inc Class A	\$308.29	7.05	2.85	-2.25	49,971	44,449	1.13	2.06	0.97	2,080	840	\$3.94	3	3	3	3	4	4	4	1	1
WAT	Waters Corporation	\$344.94	-0.40	-15.84	-6.95	23,684	22,366	1.28	3.32	0.87	2,871	977	\$11.45	3	3	3	3	3	3	4	4	1
ZTS	Zoetis, Inc. Class A	\$200.39	0.69	-1.75	0.36	103,146	98,822	1.09	2.02	0.96	8,193	3,629	\$5.02	3	3	3	3	3	4	4	4	4

MicroQuad 4 Screen

HEDGEYE

Good reasons to be short some of these names...

MicroQuad 4														Sales MicroQuad									
Ticker	Name	Price	1W	1M	3M	EV	MCAP	Beta	Days to Cover	Sales Corr	Sales	EBITDA	EPS	J-21	A-21	S-21	O-21	N-21	D-21	J-22	F-22	M-22	
ABBV	AbbVie, Inc.	\$108.91	-1.77	1.06	-7.31	267,396	192,870	0.41	1.95	0.69	58,883	32,334	\$13.58	4	4	4	4	4	4	4	1	1	
AMN	AMN Healthcare Services, Inc.	\$101.73	-15.39	-10.12	6.26	5,403	4,561	-1.23	2.30	0.92	3,033	424	\$4.74	3	3	4	4	4	4	4	1	1	
ANTM	Anthem, Inc.	\$390.71	2.64	4.32	-0.73	124,915	105,178	1.27	2.46	0.85	147,941	10,085	\$27.97	4	4	4	4	4	4	4	4	4	
BIOS	Bioplus Acquisition Corp. Class A	\$24.26	-2.91	-4.29	21.82	#N/A	18,656	1.01	2.19	0.86	3,620	305	\$0.82	1	1	1	4	4	4	4	4	1	
JNJ	Johnson & Johnson	\$160.11	-0.76	-3.21	-4.75	446,112	430,990	0.48	2.45	0.87	97,162	34,645	\$10.30	3	3	3	4	4	4	4	4	4	
LH	Laboratory Corporation of America Holdings	\$275.71	-1.29	-8.00	-0.27	32,123	27,284	0.91	2.88	0.88	14,328	2,891	\$18.14	1	1	1	1	4	4	4	4	4	
MASI	Masimo Corporation	\$285.15	3.30	4.55	9.06	15,716	15,600	1.00	6.03	0.97	1,306	402	\$4.29	4	3	4	4	4	4	4	1	1	
MRNA	Moderna, Inc.	\$331.88	7.28	-23.61	15.87	133,352	131,807	1.18	1.09	0.91	21,259	15,760	\$28.54	4	4	4	4	4	4	4	4	4	
NEO	NeoGenomics, Inc.	\$43.60	-2.46	-7.59	0.53	5,908	5,513	2.26	5.70	0.95	562	24	-\$0.17	1	1	1	4	1	3	2	2	2	
OPCH	Option Care Health Inc	\$24.34	-2.91	-4.29	21.82	5,847	4,754	1.01	2.19	0.67	3,620	305	\$0.82	1	1	1	4	4	4	4	4	1	
VRTX	Vertex Pharmaceuticals Incorporated	\$181.90	1.04	-3.69	-10.08	42,081	47,610	0.40	3.59	0.78	7,900	4,453	\$13.03	4	4	4	4	4	4	4	4	1	
WST	West Pharmaceutical Services, Inc.	\$407.43	-2.46	-9.96	9.04	31,627	31,159	1.24	2.65	0.87	2,978	942	\$8.68	3	3	3	3	4	4	4	1	1	

AMN and NEO are stuck here, but NEO still looks very different than the others. Also, we see a couple of more COVID-comp names including LabCorp (LH) and West (WST).

MicroQuad 1 Screen

HEDGEYE

Who can make the turn?

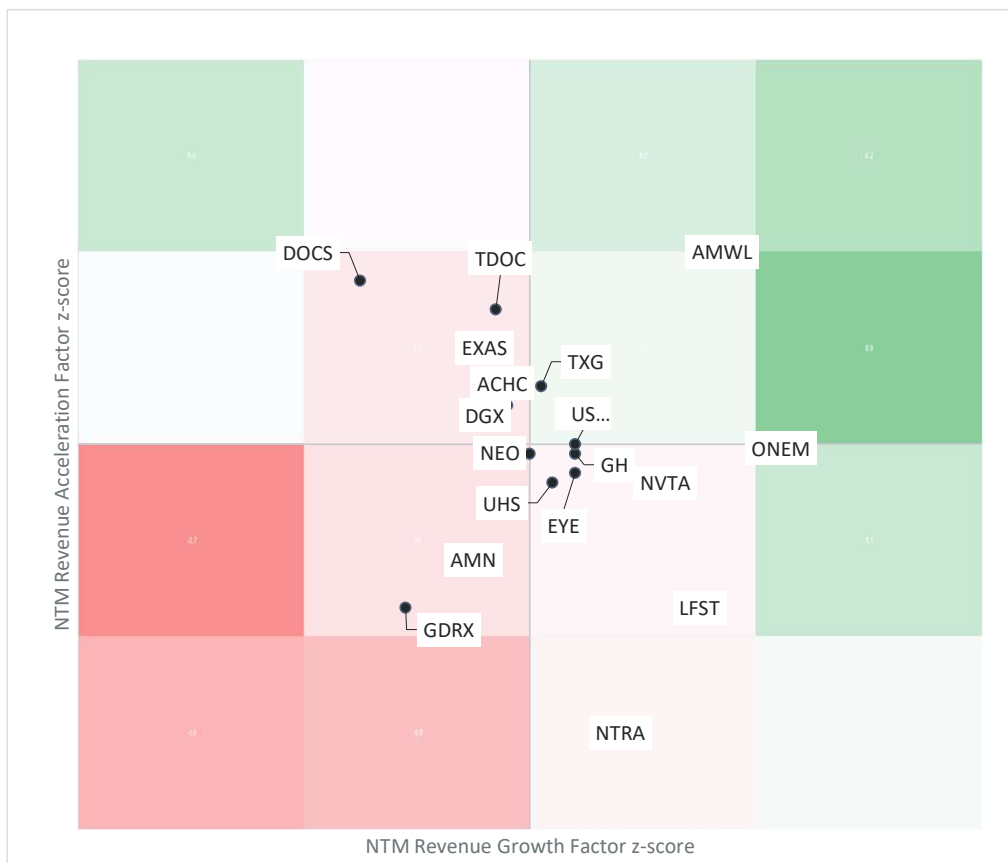
Ticker	Name	Price	MicroQuad 1										Sales MicroQuad									
			1W	1M	3M	EV	MCAP	Beta	Days to Cover	Sales Corr	Sales	EBITDA	EPS	J-21	A-21	S-21	O-21	N-21	D-21	J-22	F-22	M-22
ABT	Abbott Laboratories	\$117.57	-0.29	-7.78	0.05	236,488	224,651	0.70	2.09	0.95	39,428	11,424	\$4.61	1	1	1	1	4	2	2	3	3
AMED	Amedisys, Inc.	\$154.19	5.83	-9.12	-40.34	5,779	5,527	0.96	1.92	0.93	2,415	320	\$6.39	1	1	1	1	1	3	2	2	2
BAX	Baxter International Inc.	\$79.89	-0.86	-4.40	-1.88	45,372	41,088	0.48	2.75	0.78	13,079	3,271	\$3.87	3	3	3	1	1	1	4	2	2
BDX	Becton, Dickinson and Company	\$242.68	0.38	-7.26	-2.17	86,555	70,962	0.53	2.08	0.86	19,520	5,493	\$12.39	1	1	1	4	2	2	2	3	3
DGX	Quest Diagnostics Incorporated	\$142.41	-0.76	-8.59	5.87	22,093	17,898	0.80	3.22	0.79	8,965	1,966	\$9.00	1	1	1	1	1	1	4	4	4
ENSG	Ensign Group, Inc.	\$72.73	0.59	-6.38	-16.35	5,104	3,978	0.24	7.70	0.93	2,794	364	\$3.88	3	1	1	1	2	2	2	2	3
EXAS	Exact Sciences Corporation	\$97.75	2.36	-6.59	-14.25	17,209	16,160	0.09	6.91	0.82	2,014	-359	-\$2.81	1	1	1	1	1	1	2	4	4
FLGT	Fulgent Genetics, Inc.	\$78.67	-3.00	-9.32	3.09	2,239	2,482	0.06	6.95	0.95	623	0	\$7.45	4	4	1	1	1	1	4	4	4
GKOS	Glaukos Corp	\$47.20	2.72	-8.85	-17.21	2,035	2,091	0.85	3.23	0.68	271	13	-\$1.37	3	1	1	1	4	2	2	2	3
HOLX	Hologic, Inc.	\$70.26	-2.04	-9.48	1.04	21,348	18,659	0.63	2.71	0.87	3,882	1,388	\$3.69	1	1	1	1	4	2	2	3	3
MCK	McKesson Corporation	\$203.06	1.73	-2.68	7.31	40,469	32,341	0.55	2.84	0.57	255,992	4,793	\$20.81	1	1	1	1	1	1	4	4	4
OPK	OPKO Health, Inc.	\$3.76	0.53	0.53	7.43	2,572	2,513	0.59	16.29	0.59	1,270	109	-\$0.05	1	1	1	1	1	1	1	3	4
PKI	PerkinElmer, Inc.	\$169.68	-0.77	-9.18	10.11	21,796	22,259	0.78	3.46	0.94	4,112	1,151	\$7.08	1	1	1	1	1	1	1	4	4
PRSC	ModivCare Inc.	\$167.25	-3.54	-3.52	1.12	2,593	2,325	0.25	3.07	0.87	2,169	188	\$6.46	4	1	1	1	2	2	3	3	3
QDEL	Quidel Corporation	\$135.01	-0.88	-8.23	7.90	5,267	5,615	-0.58	6.26	0.79	975	505	\$7.68	1	1	1	1	2	2	2	3	3
SYK	Stryker Corporation	\$263.85	-0.79	-4.78	2.43	116,242	103,977	1.41	3.92	0.96	18,307	5,289	\$10.22	1	1	1	1	2	2	2	3	3
TDOC	Teladoc Health, Inc.	\$136.88	4.65	2.18	-6.74	21,990	21,943	1.11	7.52	0.78	2,465	366	-\$1.91	4	1	1	1	3	2	2	3	3
TMO	Thermo Fisher Scientific Inc.	\$577.35	-1.06	2.56	11.07	254,079	240,757	1.00	1.38	0.97	37,845	10,946	\$21.09	1	1	1	1	3	3	4	4	4
AMGN	Amgen Inc.	\$206.78	-1.12	-5.20	-16.61	145,222	118,817	0.58	4.12	0.84	26,887	16,109	\$17.54	1	1	1	1	1	4	4	4	4

Not much change week-over-week. We're looking for the stocks that could rotate over to MQ1 vs. fading back to MQ4.

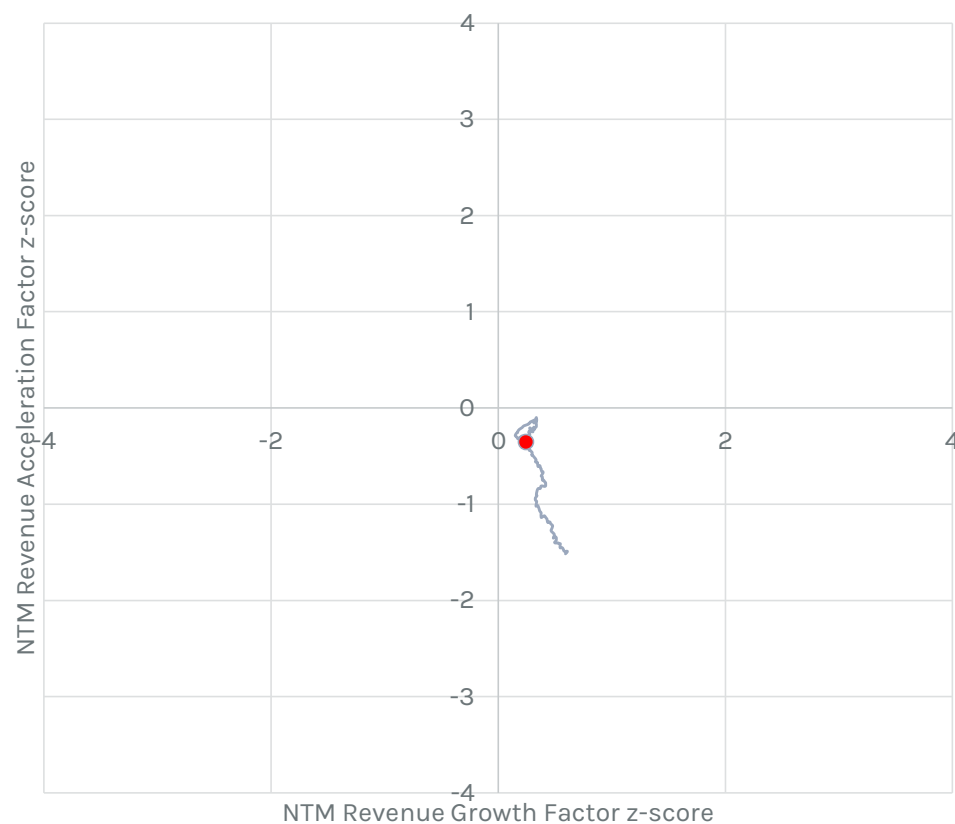
Position Monitor | October 15, 2021

HEDGEYE

Sigma Positioning – Current Position Monitor



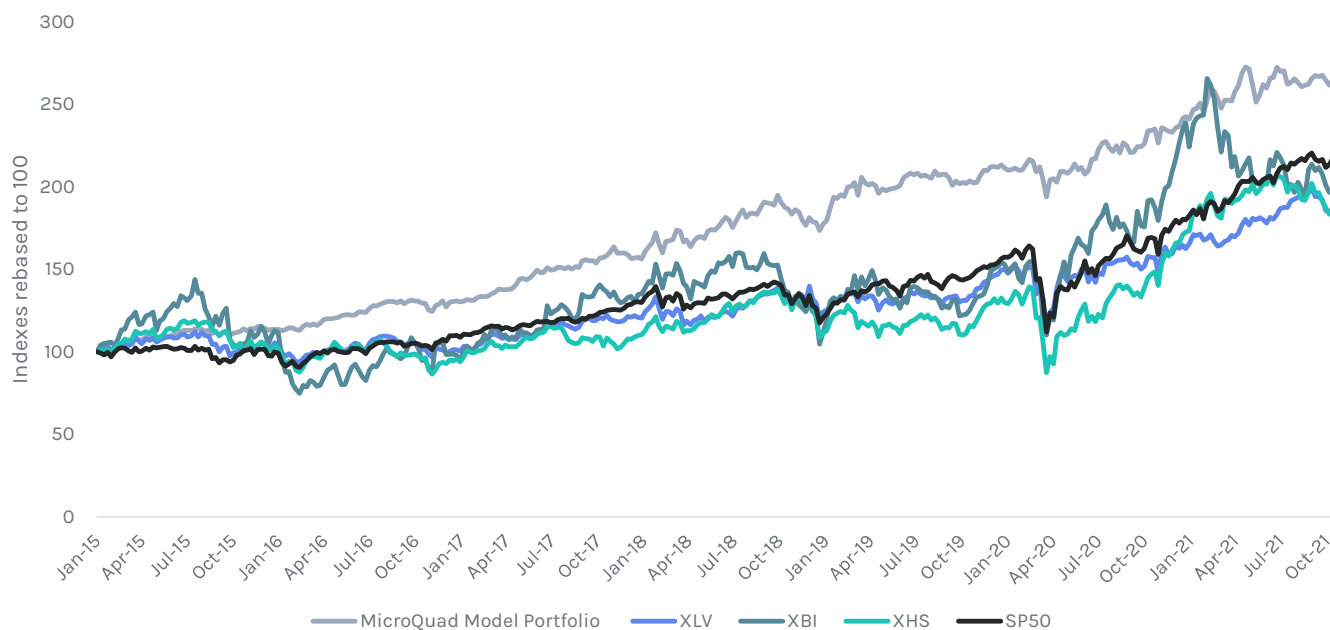
Sigma Positioning – Universe Average



MicroQuad Model Portfolio

HEDGEYE

Wrap up for the week of 10/22/2021



Particulars	MoM	YTD	YoY	Since 2015
MicroQuad Model Portfolio	-0.3%	10.7%	13.5%	15.5%
XLV	-0.2%	16.1%	22.1%	10.0%
XBI	-4.7%	-11.8%	5.6%	10.5%
XHS	-1.0%	9.1%	27.4%	9.8%
SP50	2.0%	21.0%	31.1%	12.3%

For the week ending 10/22/2021, the model portfolio was up +0.80% week over week. There were 62 longs and 36 shorts, not much changed in terms of names and allocations. The batting average by MicroQuad was 63.9% overall with the longs in MQ2 and MQ3 at 84.6% and 86.3%, respectively, and the shorts in MQ4 and MQ1 at 20.0% and 21.7%, respectively.

The allocation for each MicroQuad is based on the Macro Quad 3 allocations listed in the table below.

		Micro Quad			
		1	2	3	4
Macro Quad	1	-30%	80%	30%	-10%
	2	-40%	80%	30%	-10%
	3	-50%	70%	20%	-10%
	4	-60%	70%	20%	-10%

For more information, contact us at”
support@hedgeye.com