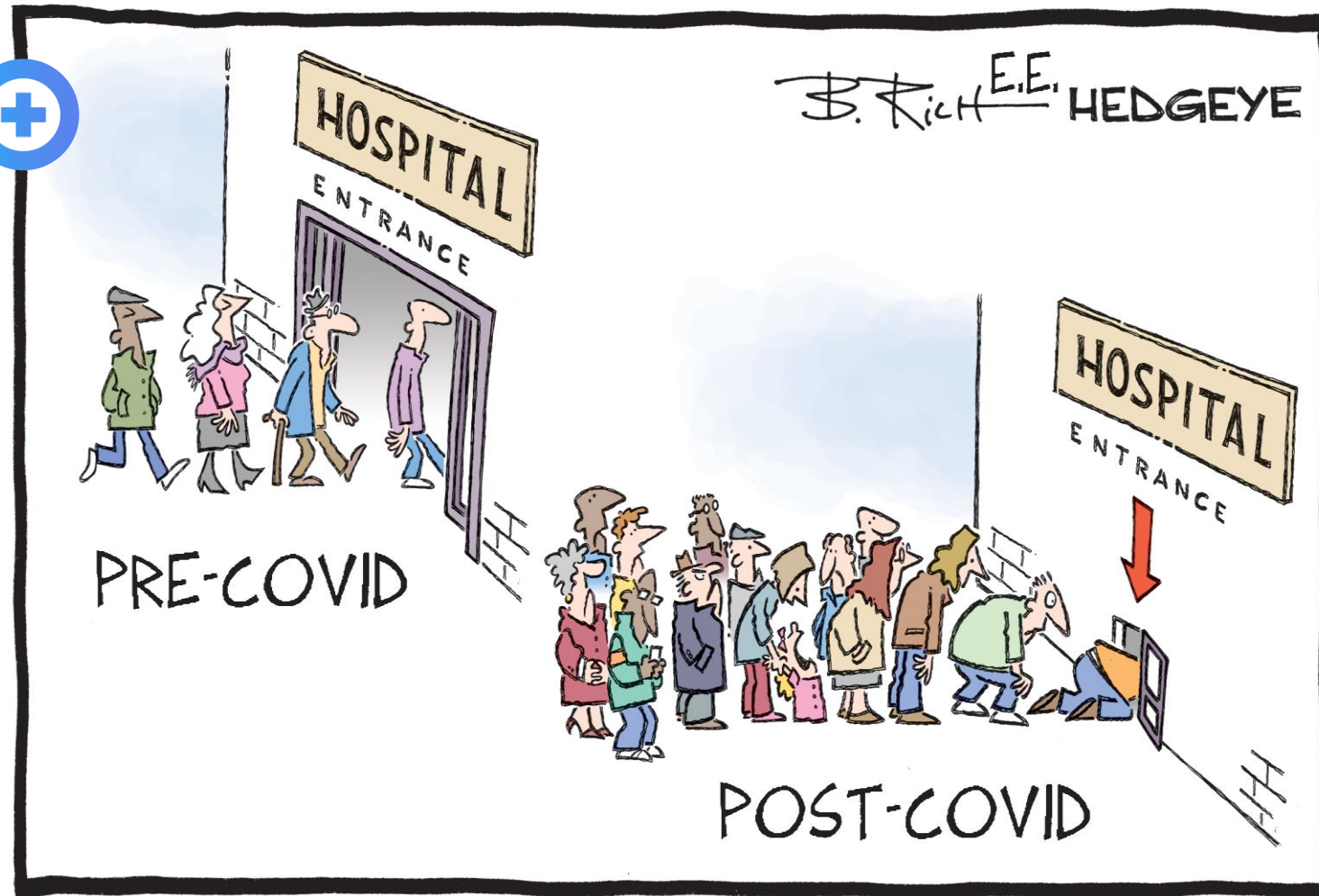


HEDGEYE

# Employment Chartbook

Another Solid Quarter for Health  
Care

November 4, 2022



## Hedgeye Health Policy

Emily Evans  
Managing Director  
Hedgeye Health Policy  
@HedgeyeEEvans  
Eevans@Hedgeye.com

## DISCLAIMER

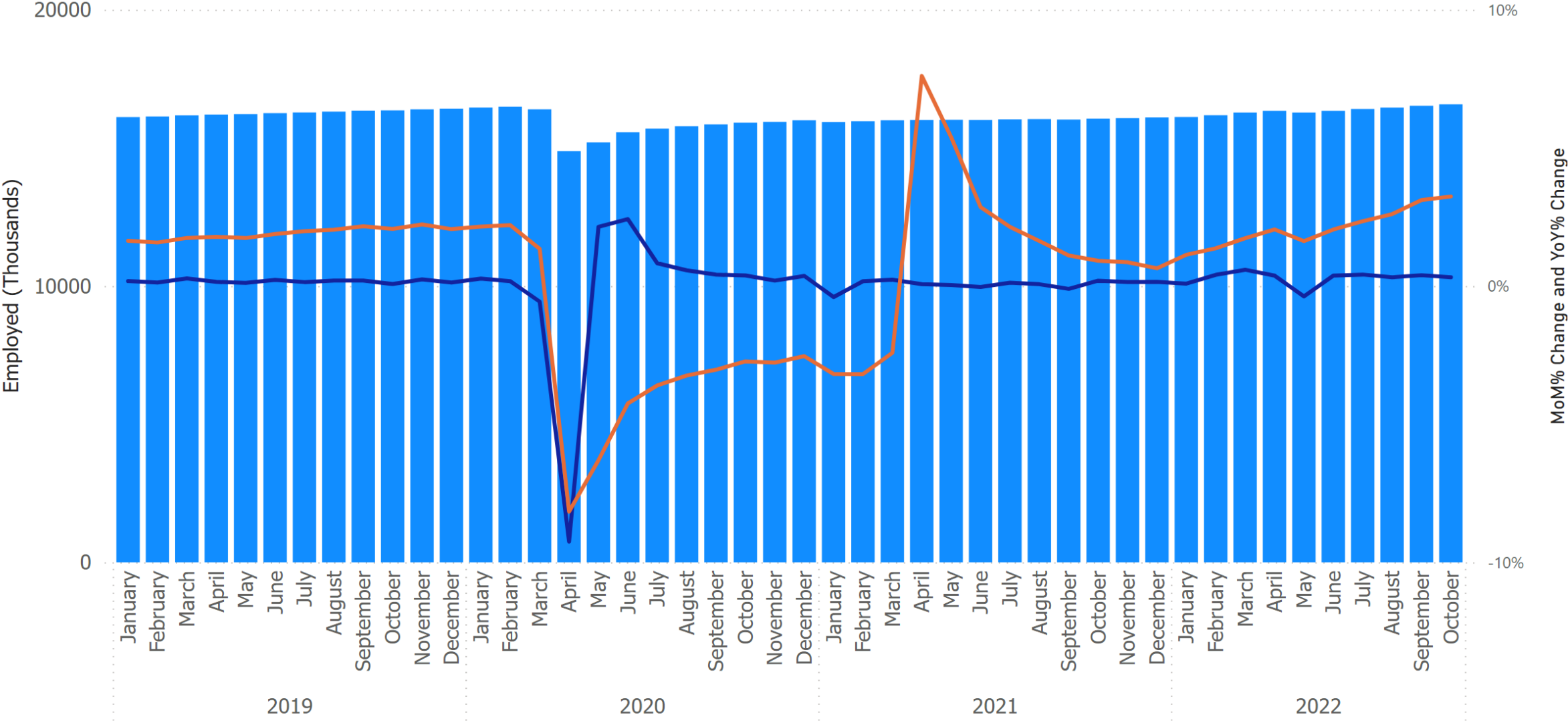
Hedgeye Risk Management, LLC (“Hedgeye”) is a registered investment advisor, registered with the State of Connecticut. Hedgeye is not a broker dealer and does not provide investment advice to individuals. This research does not constitute an offer to sell, or a solicitation of an offer to buy any security or investment vehicle. This research is presented without regard for individual investment preferences or risk parameters; it is general information and does not constitute specific investment advice, nor does it constitute or contain any legal or tax opinions. This presentation is based on information from sources believed to be reliable. Hedgeye is not responsible for errors, inaccuracies or omissions of information. The opinions and conclusions contained in this report are those of the individual expressing those opinions or conclusion and are intended solely for the use of Hedgeye’s clients and subscribers, and the authorized recipients of the content. In reaching its own opinions and conclusions, Hedgeye and its employees have relied upon research conducted by Hedgeye’s employees, which is based upon sources considered credible and reliable within the industry. Neither Hedgeye, nor its employees nor any individual expressing opinions, conclusions or data are responsible for the validity or authenticity of the information upon which it has relied.

## TERMS OF USE

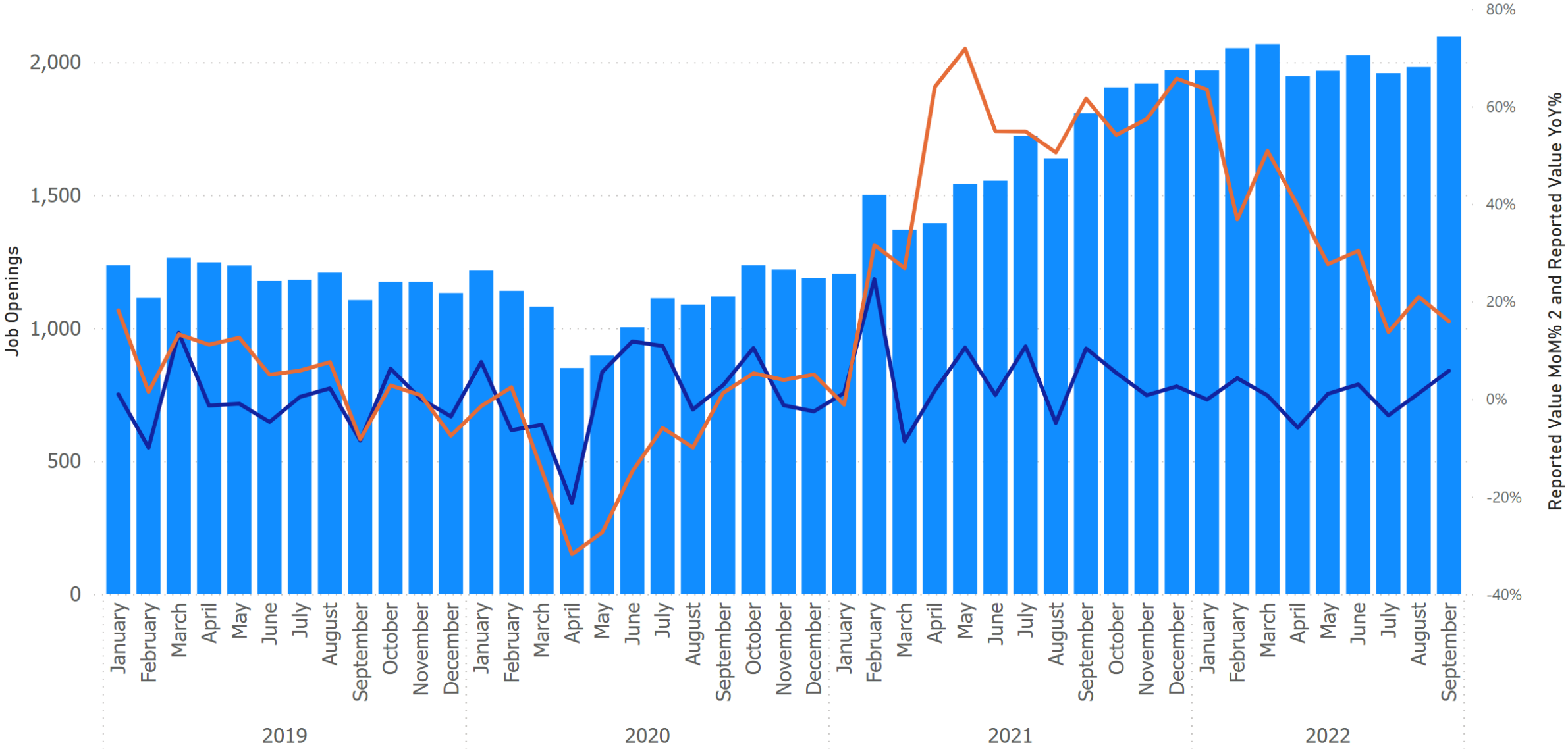
This report is protected by United States and foreign copyright laws and is intended solely for the use of its authorized recipient. Access must be provided directly by Hedgeye. There is a fee associated with access to this report and the information and materials presented during the event. **Redistribution or republication of this report and its contents are strictly prohibited.** By joining this call or possessing these materials, you agree to these Terms. For more detail please refer to the appropriate sections of the Hedgeye Services Agreement and the Terms of Service at [https://www.hedgeye.com/terms\\_of\\_service](https://www.hedgeye.com/terms_of_service).

# Health Care Employment

● Health Care ● MoM% Change ● YoY% Change

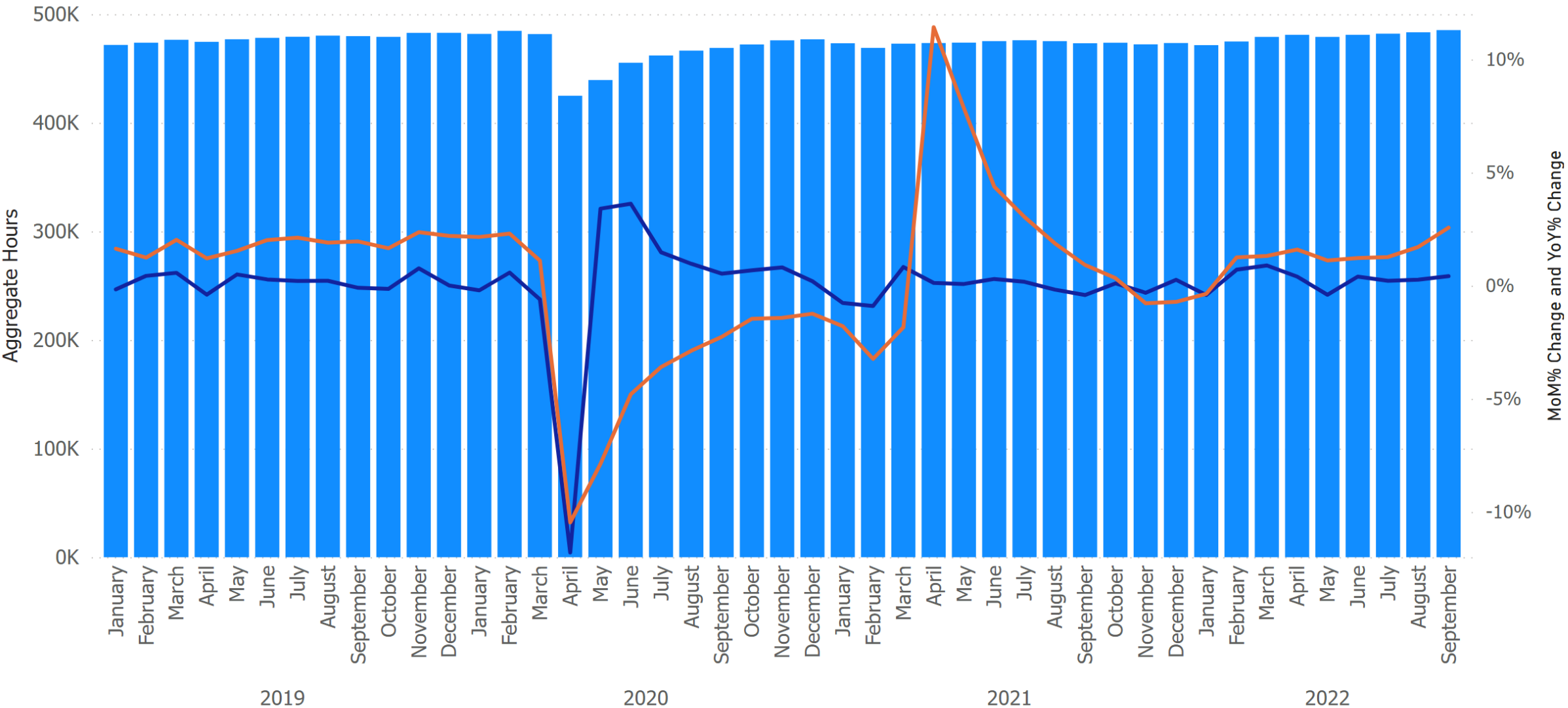


**Data Element**   ● Job Openings   ● Reported Value MoM% 2   ● Reported Value YoY%



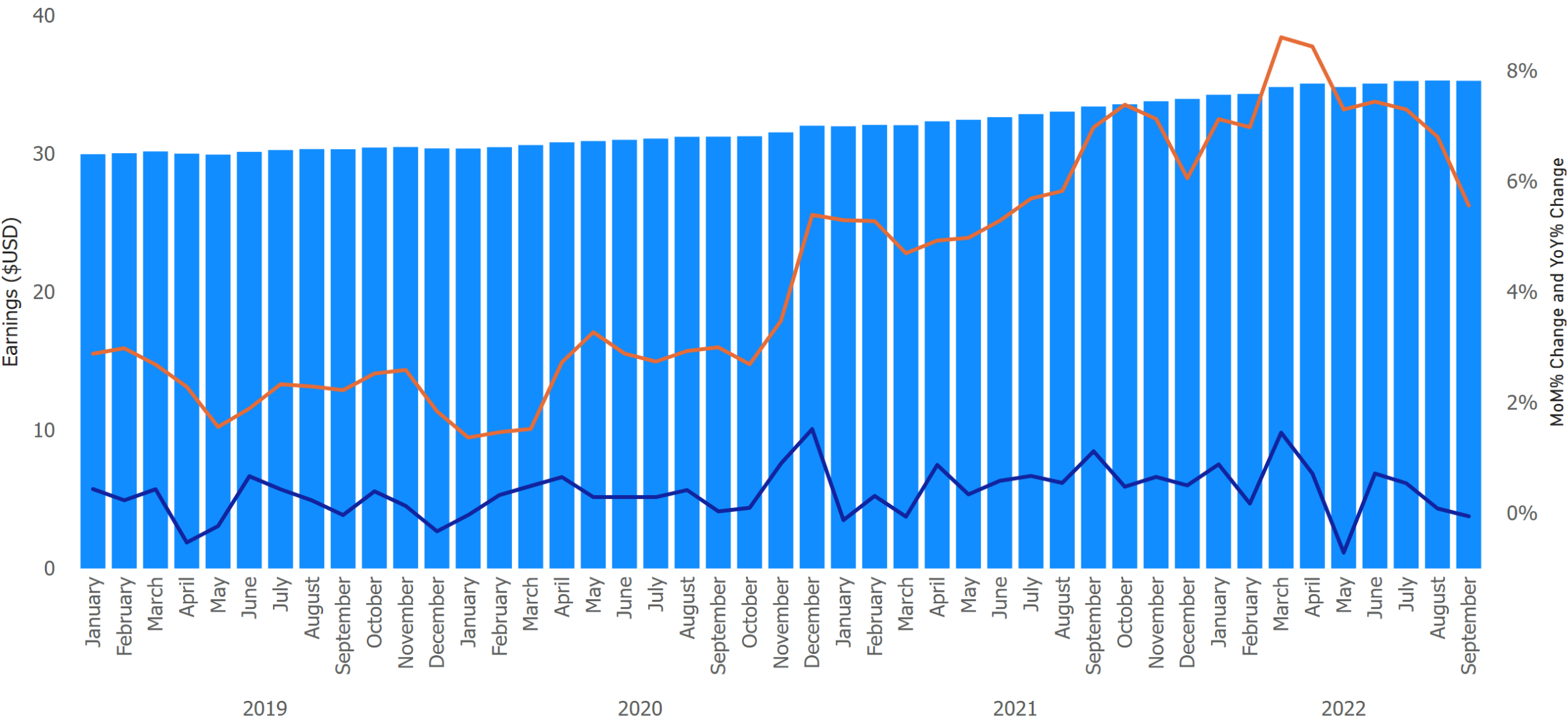
# Health Care | Hours Worked

Aggregate weekly hours of production and nonsupervisory employees, thousands, health care, seasonally adjusted MoM% Change YoY% Change

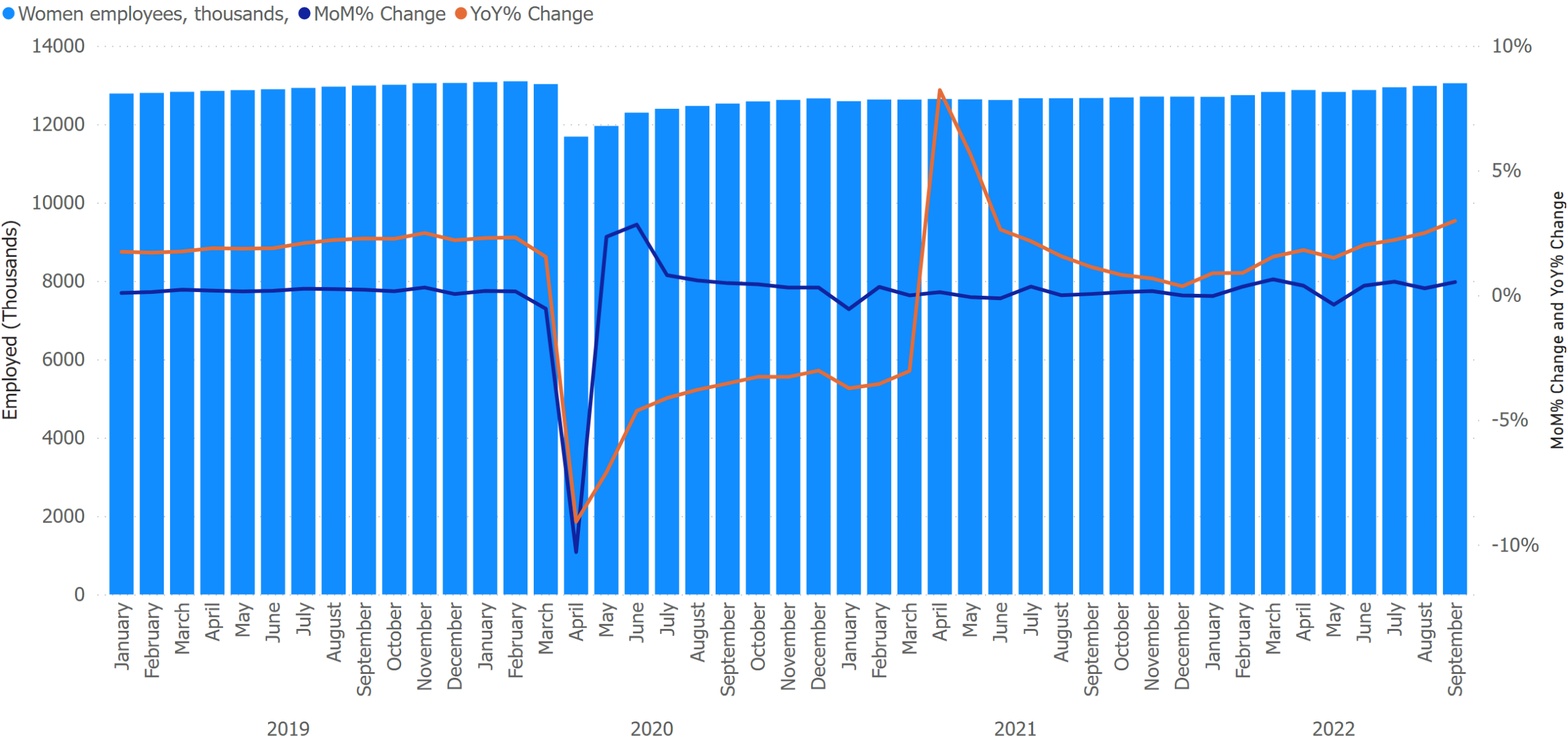


# Health Care | Hourly Earnings

● Average hourly earnings of all employees ● MoM% Change ● YoY% Change

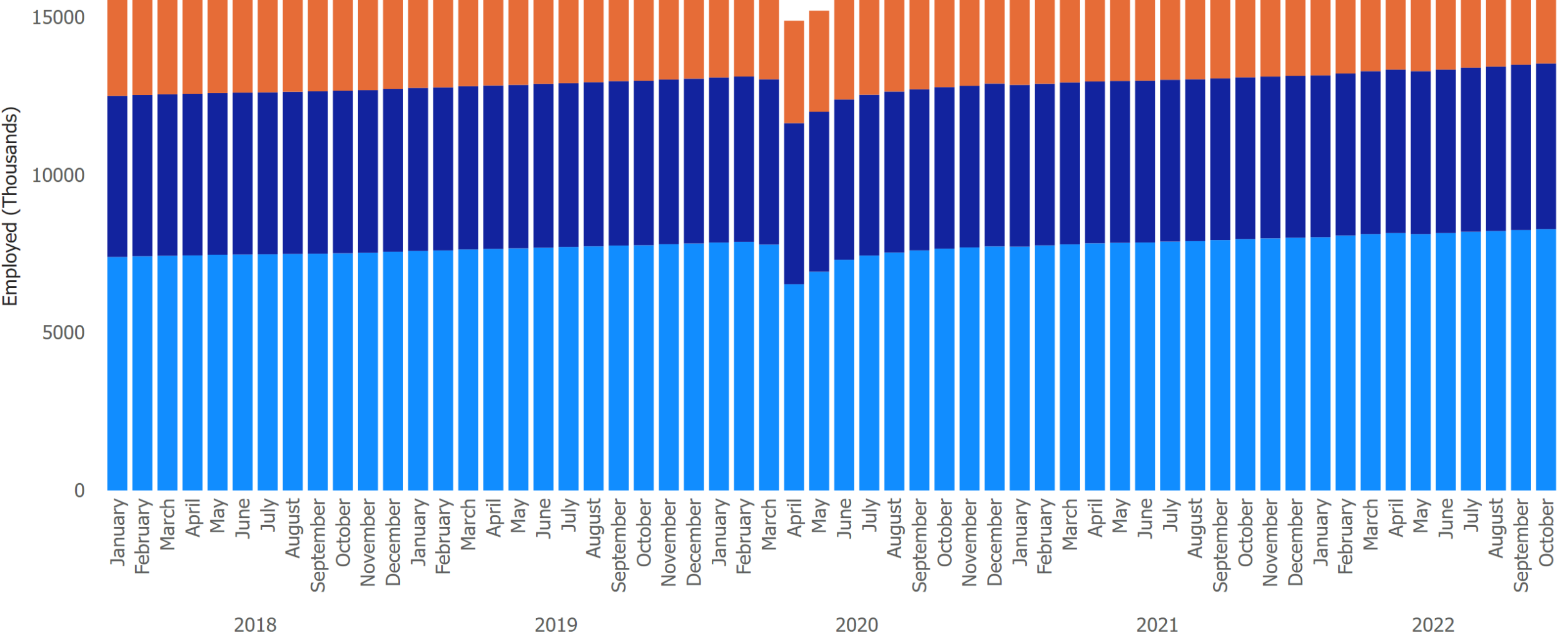


# Health Care Employment | Women



# Health Care Employment | Ambulatory, Hospitals & Nursing and Residential Care

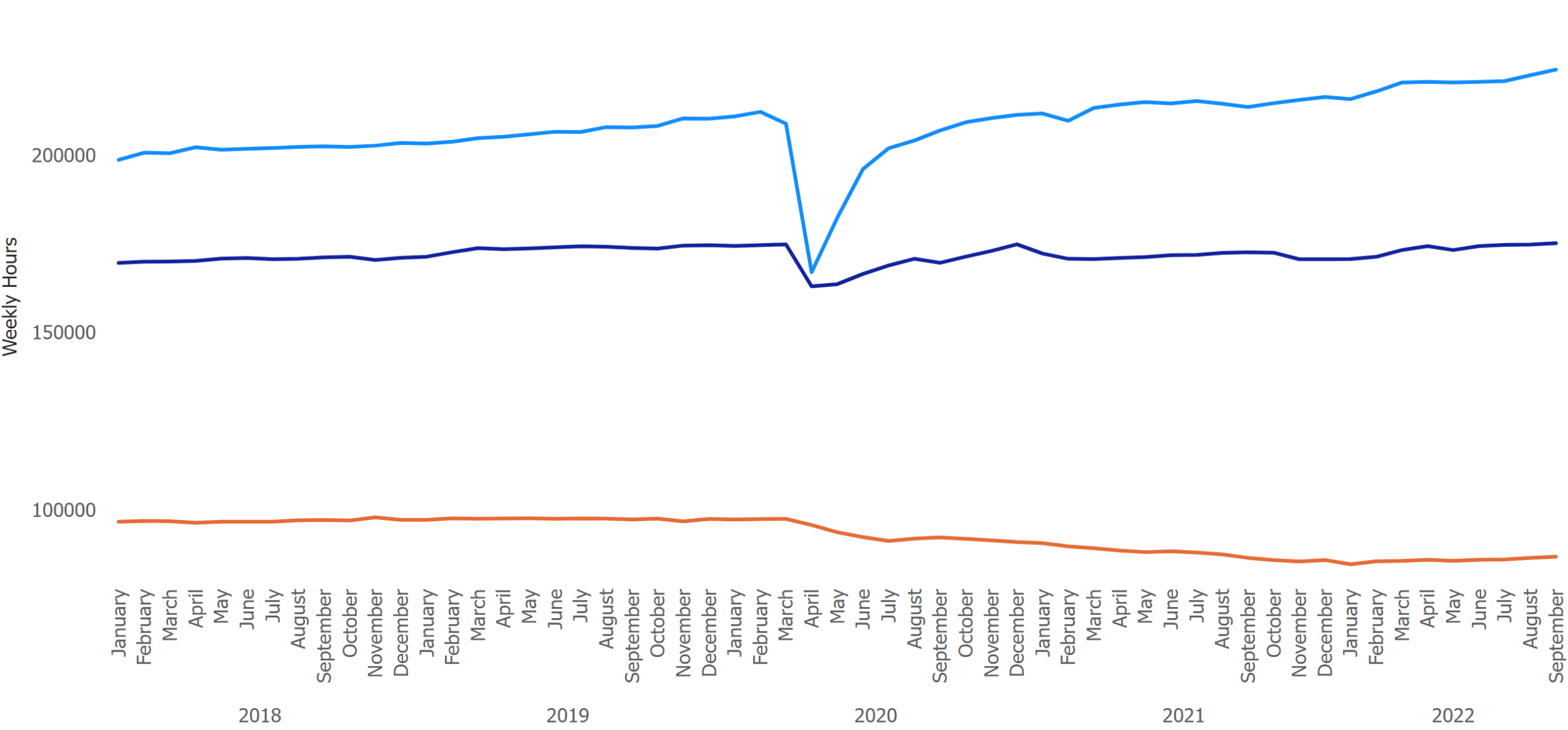
● Ambulatory health care services ● Hospitals ● Nursing and residential care facilities





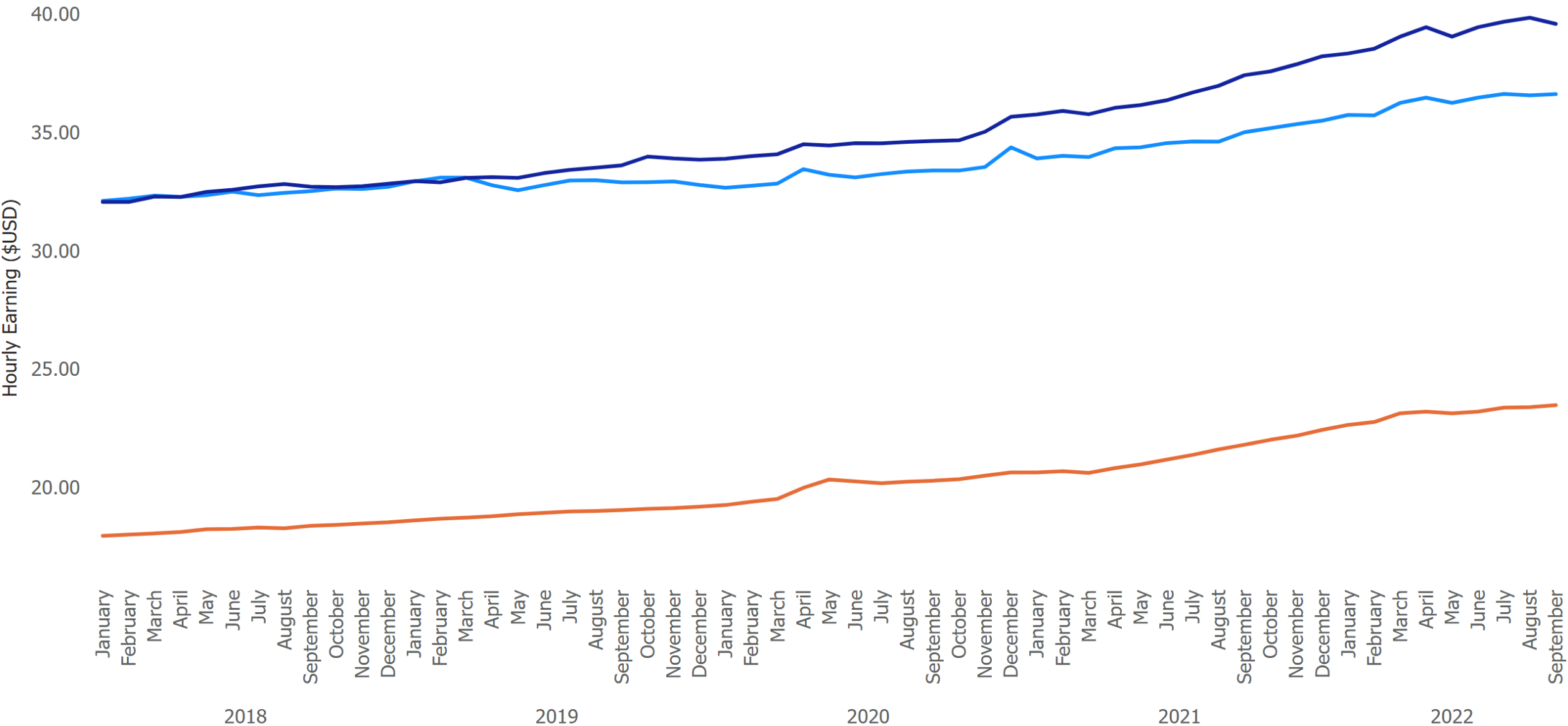
# Aggregate Weekly Hours Worked | Ambulatory Health Care, Hospitals, Nursing and Residential Care Facilities

● Ambulatory health care services ● Hospitals ● Nursing and residential care facilities



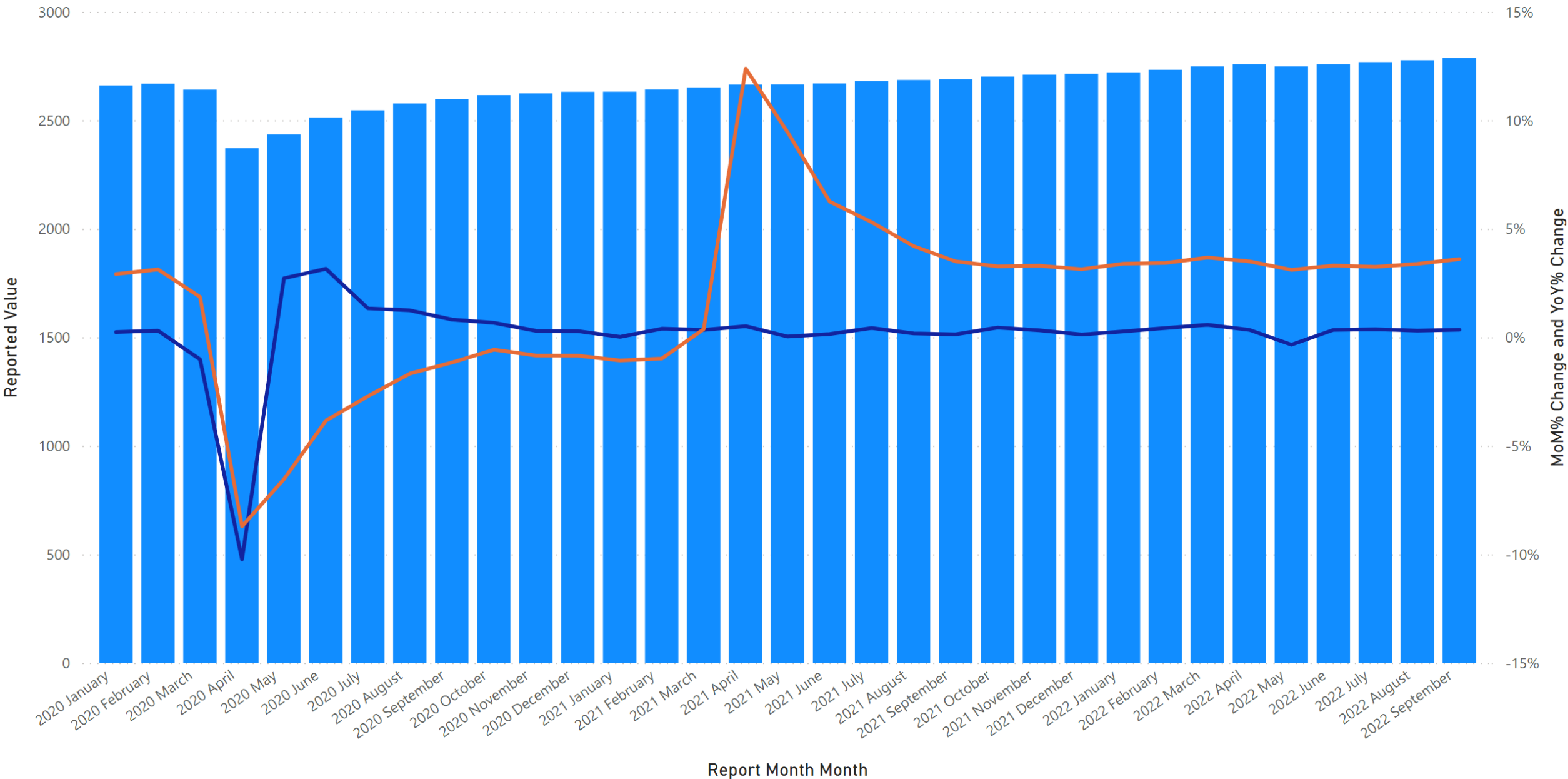
# Average Hourly Earnings, All Employees | Ambulatory Health Care, Hospitals, Nursing and Residential

Ambulatory health care services Hospitals Nursing and residential care facilities



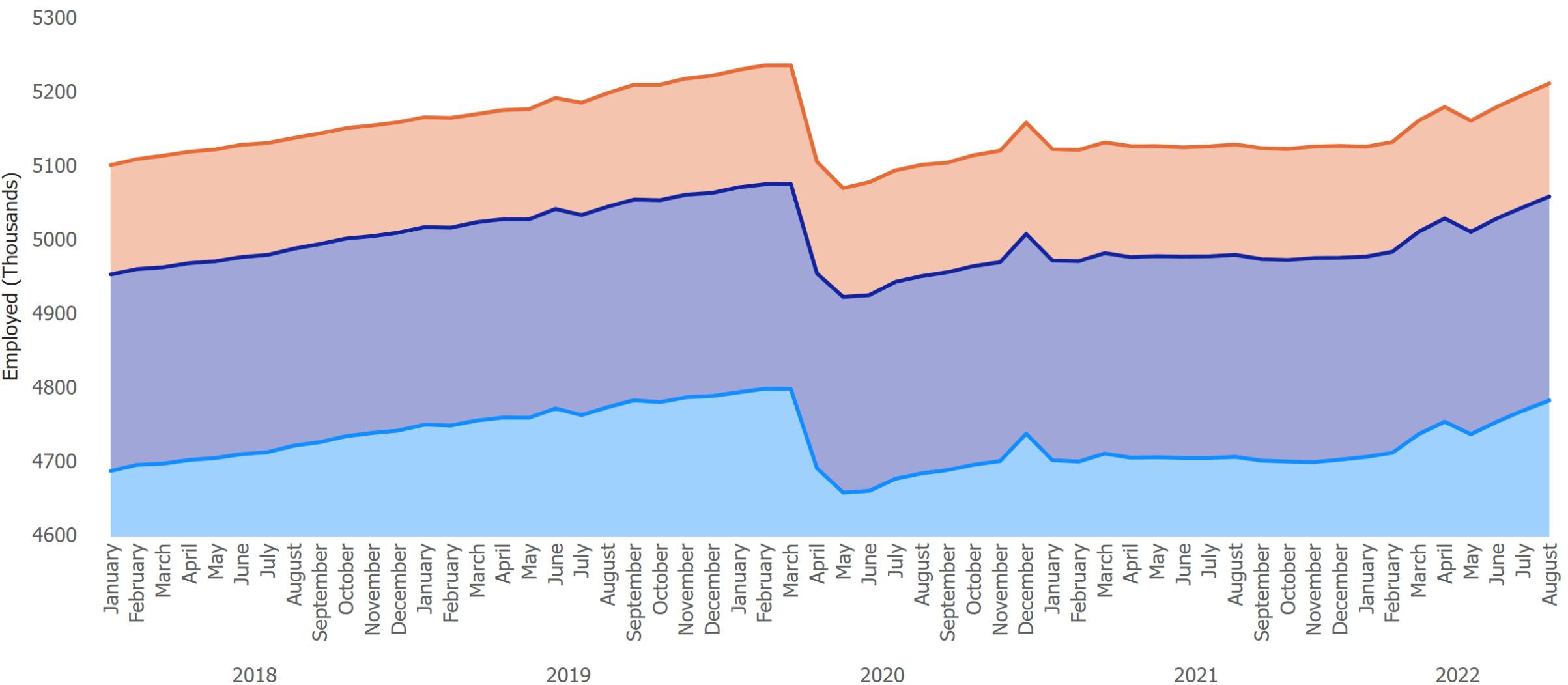
Reported Value, MoM% Change and YoY% Change by Year, Month and Industry

**Industry** ● Offices of Physicians, except mental health ● MoM% Change ● YoY% Change



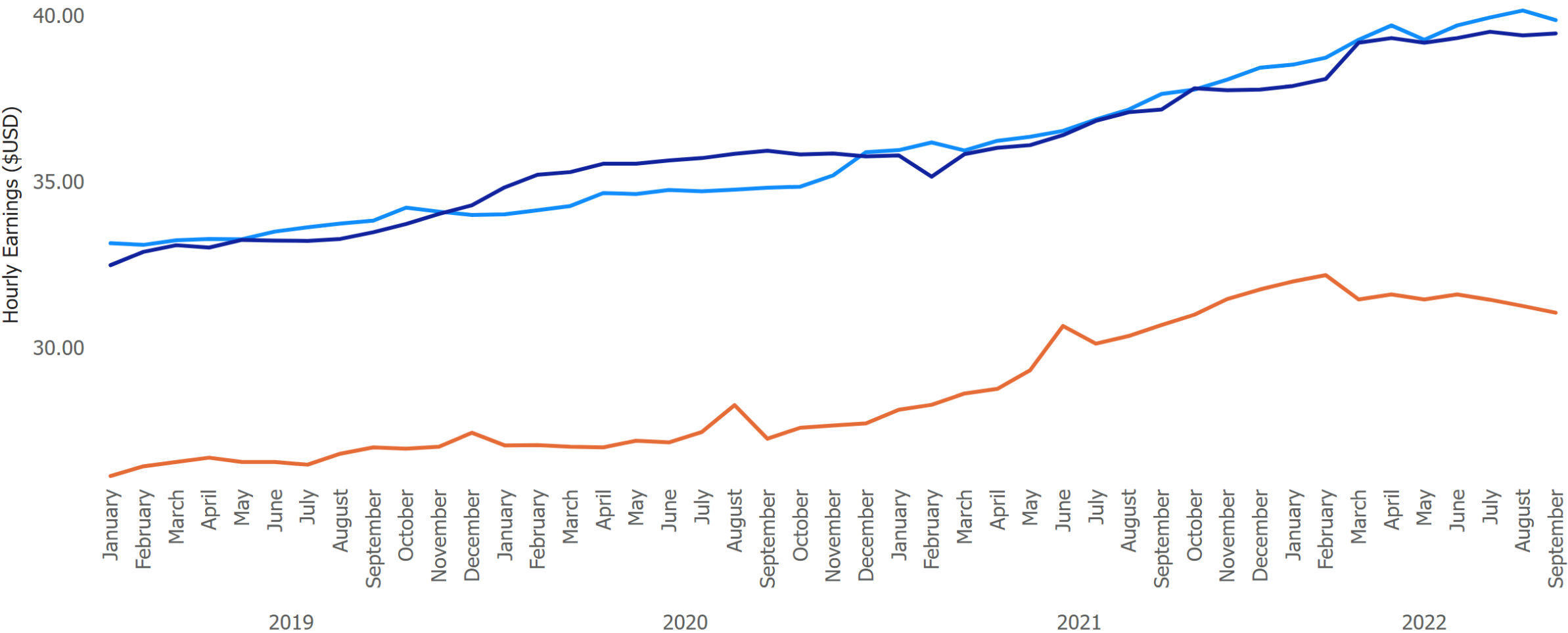
# Health Care Employment | Hospitals

● General medical and surgical hospitals ● Other hospitals ● Psychiatric and substance abuse hospitals



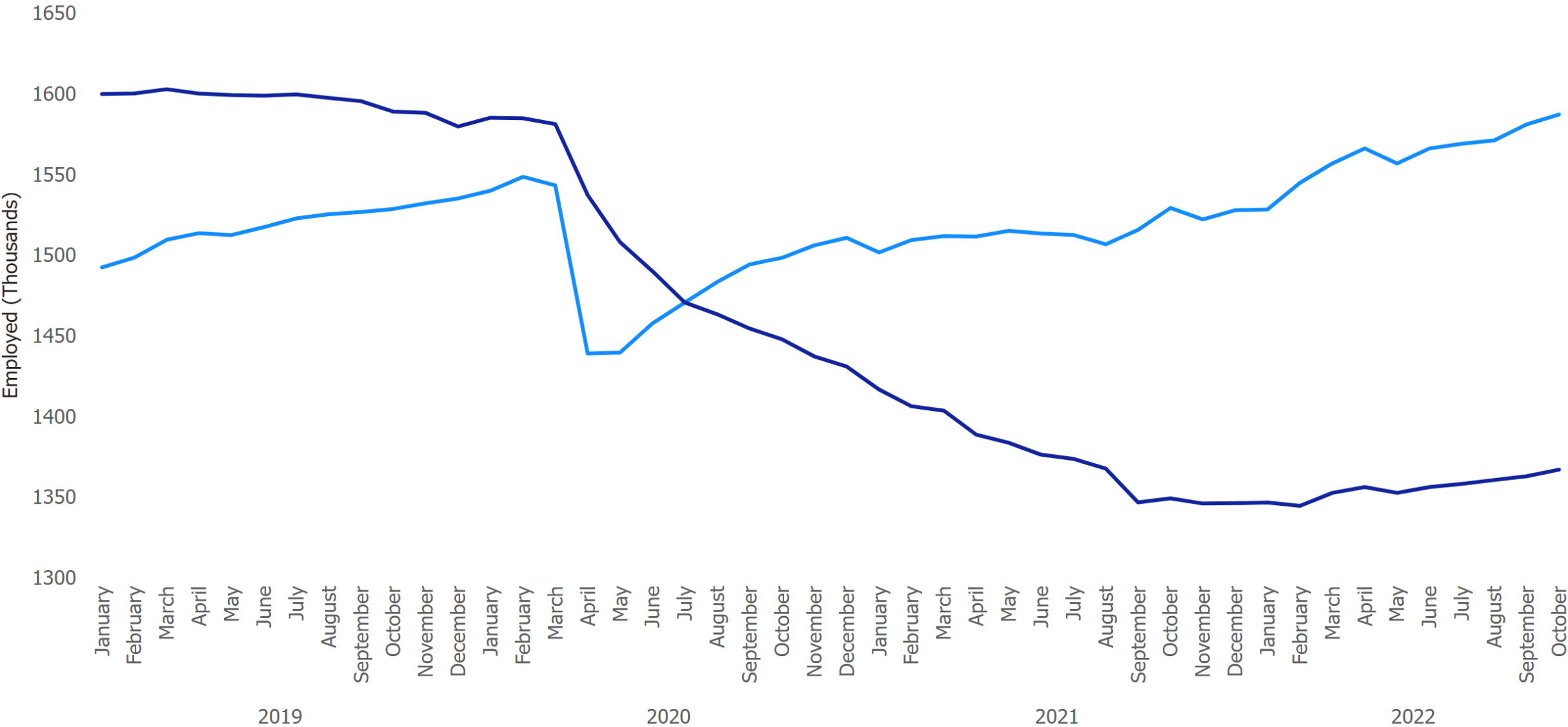
# Hospitals | Average Hourly Earnings

● General medical and surgical hospitals ● Other hospitals ● Psychiatric and substance abuse hospitals

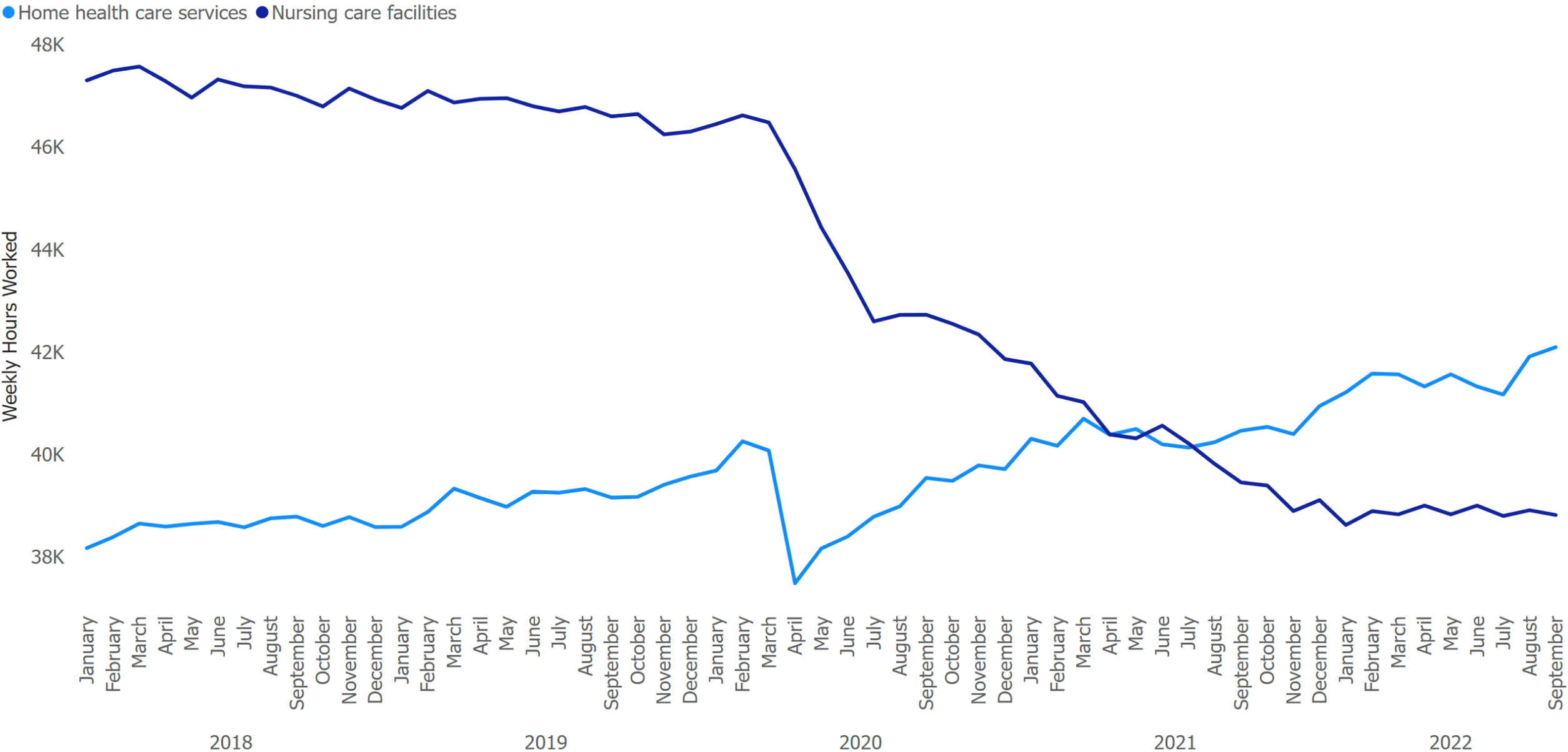


# Health Care Employment | Home Health and Nursing Care Facilities

● Home health care services ● Nursing care facilities

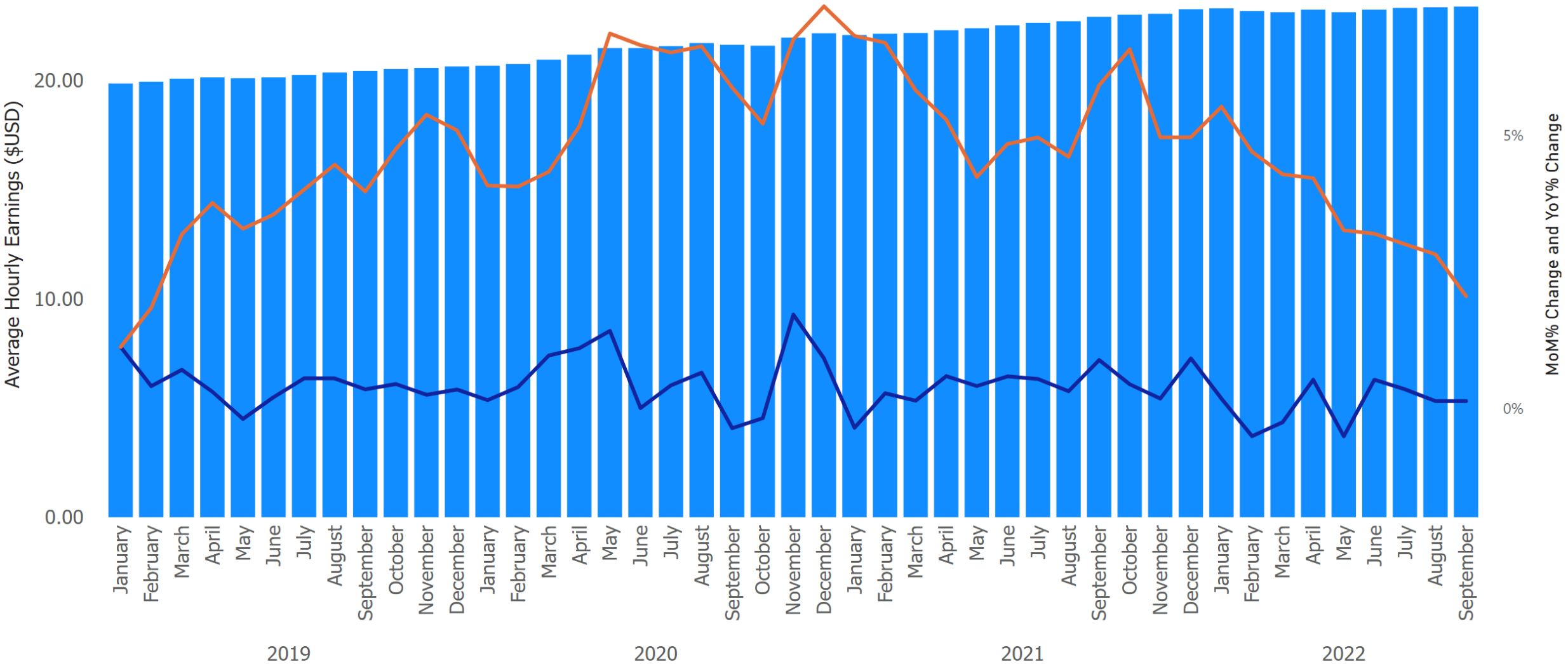


# Aggregate Hours Worked | Home Health, Nursing Care Facilities



# Home Health | Average Hourly Earnings

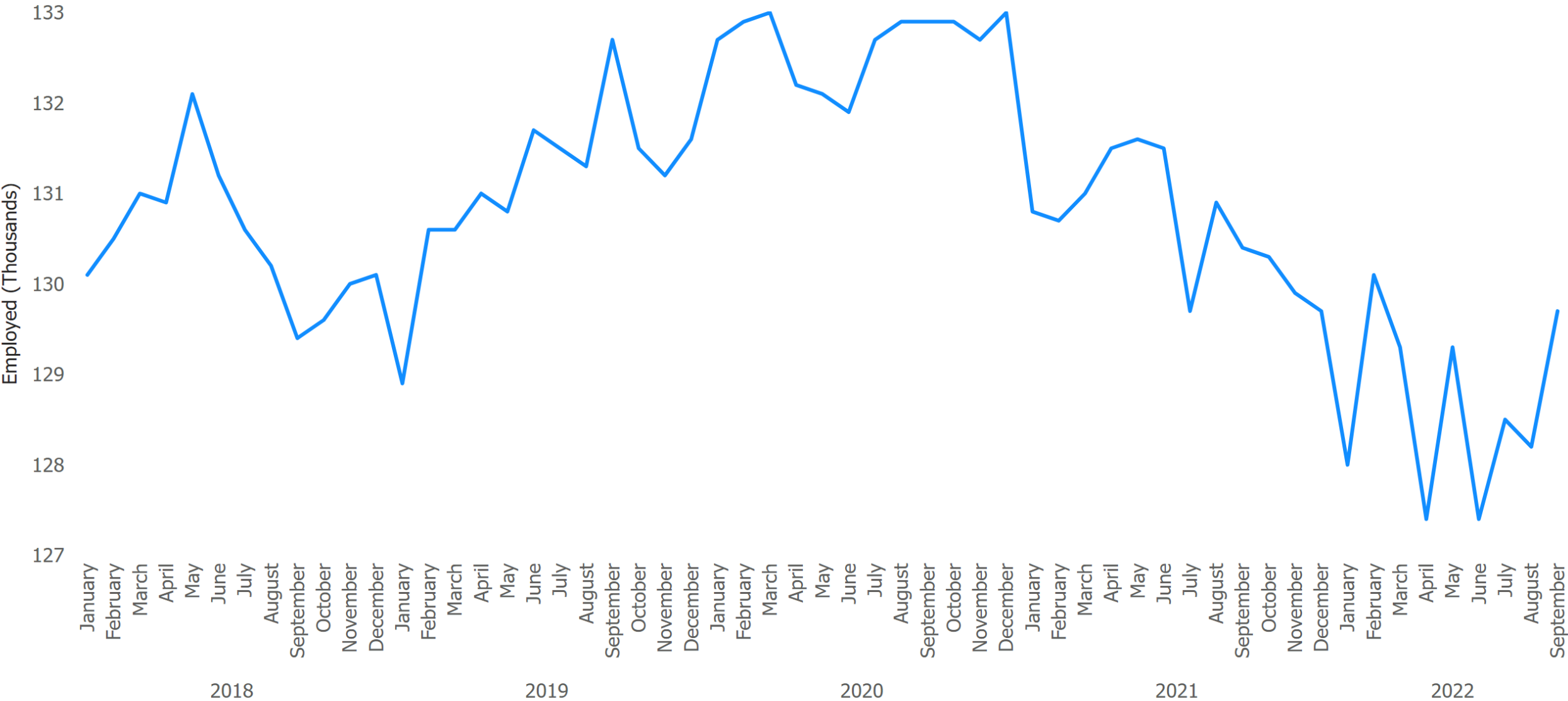
● Home health care services ● MoM% Change ● YoY% Change



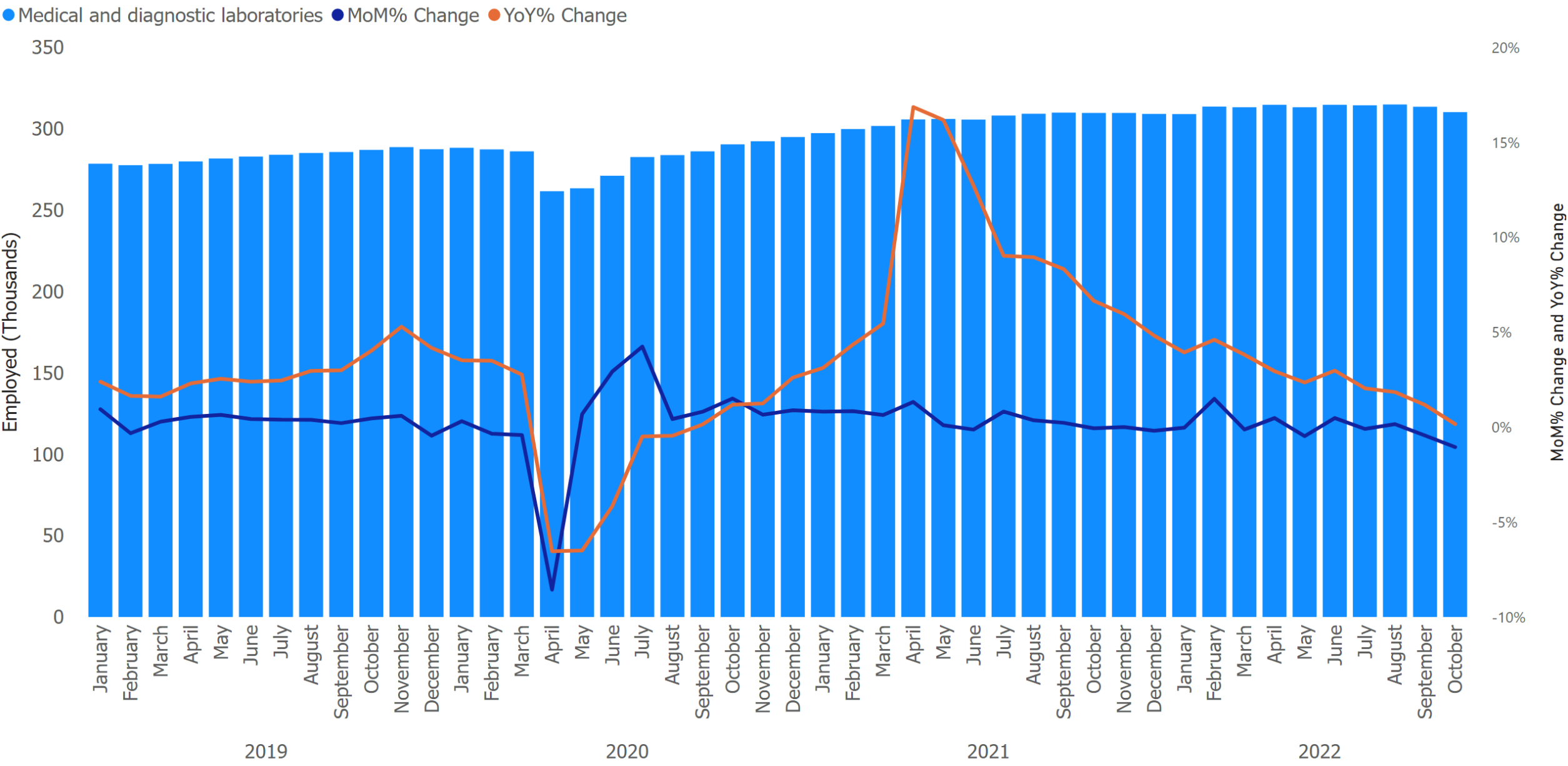


# Dialysis Clinics | Total Employed

● All employees, thousands

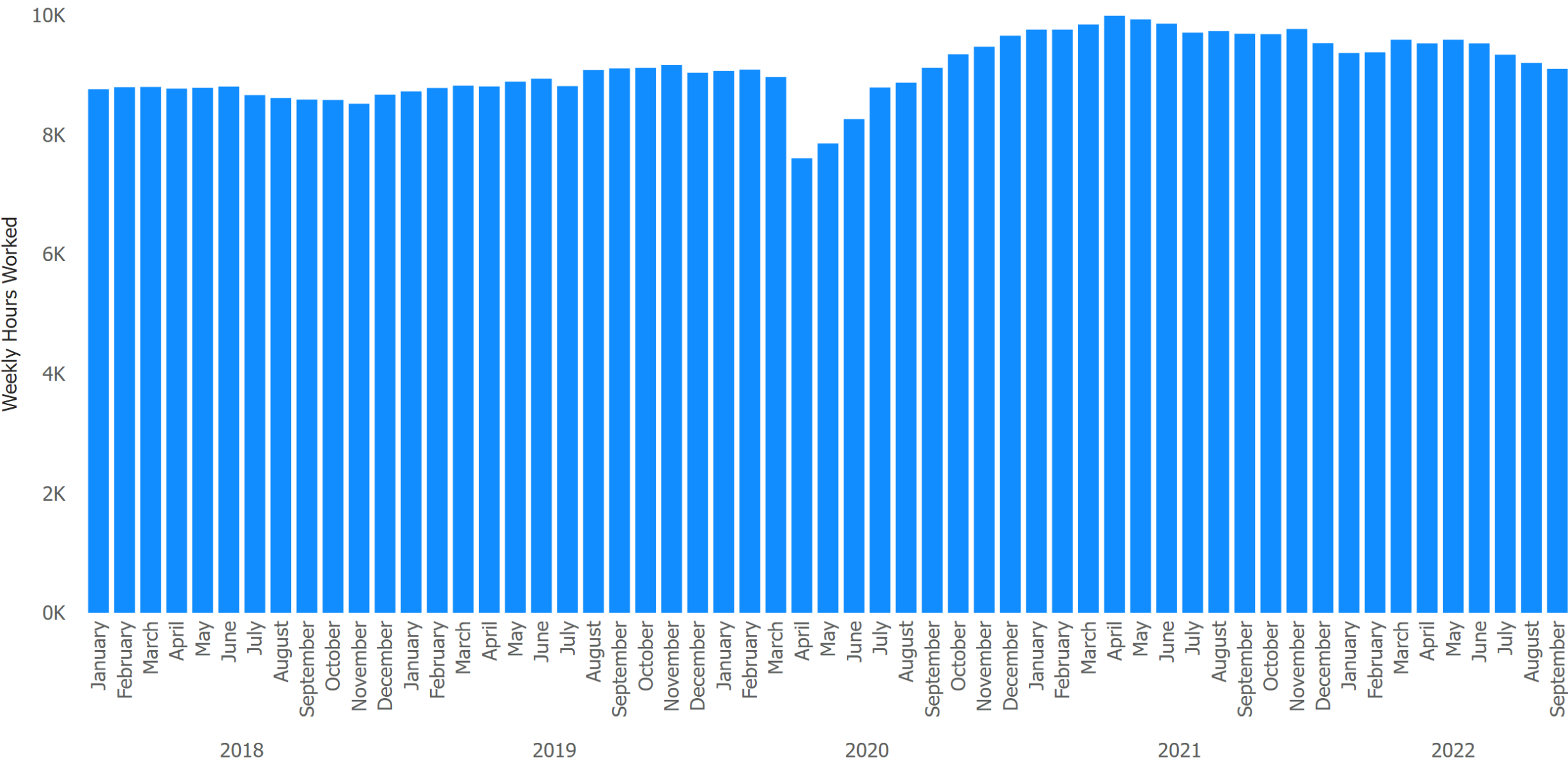


# Health Care Employment | Medical and Diagnostic Laboratories



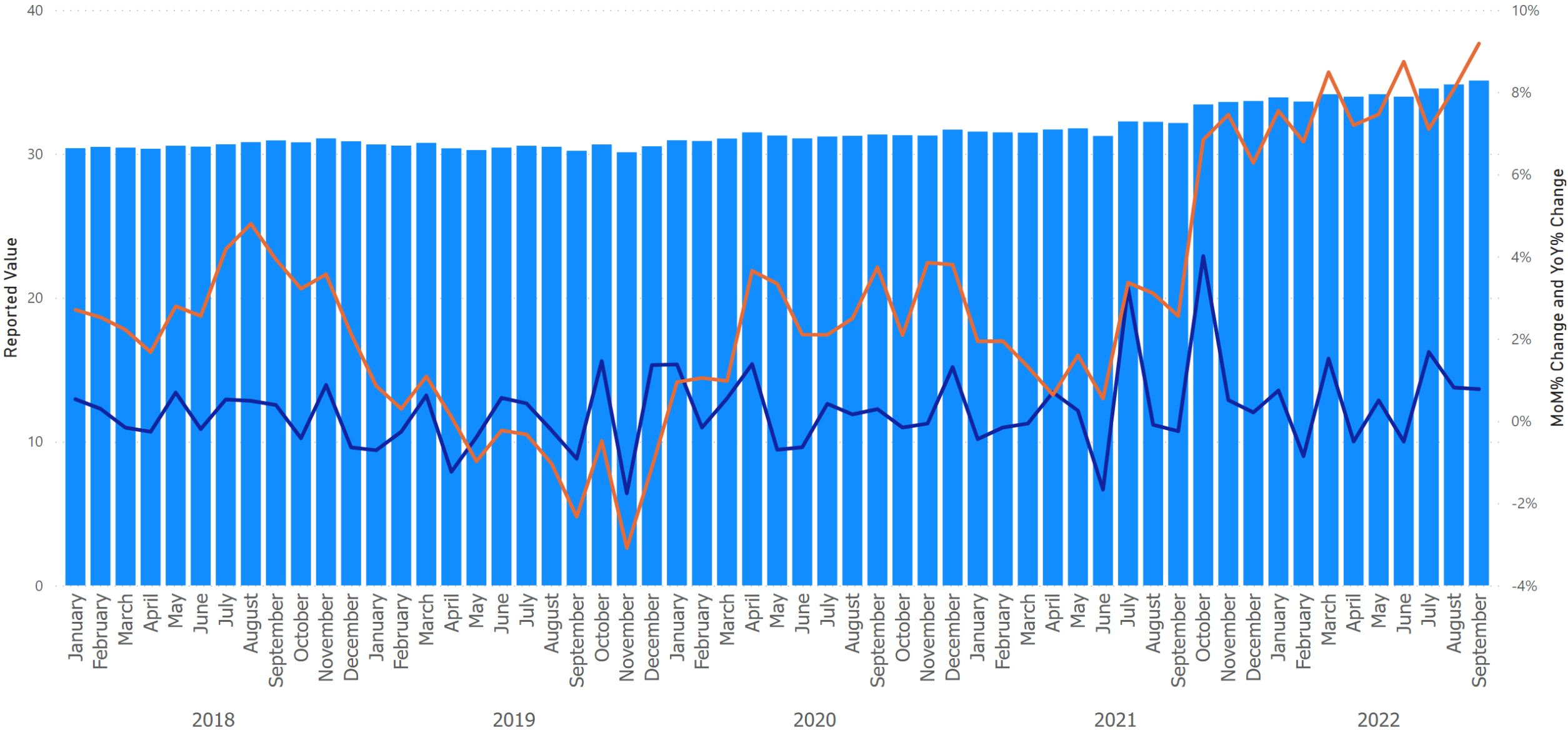
# Medical & Diagnostic Laboratories | Aggregate Hours Worked

● Medical and diagnostic laboratories



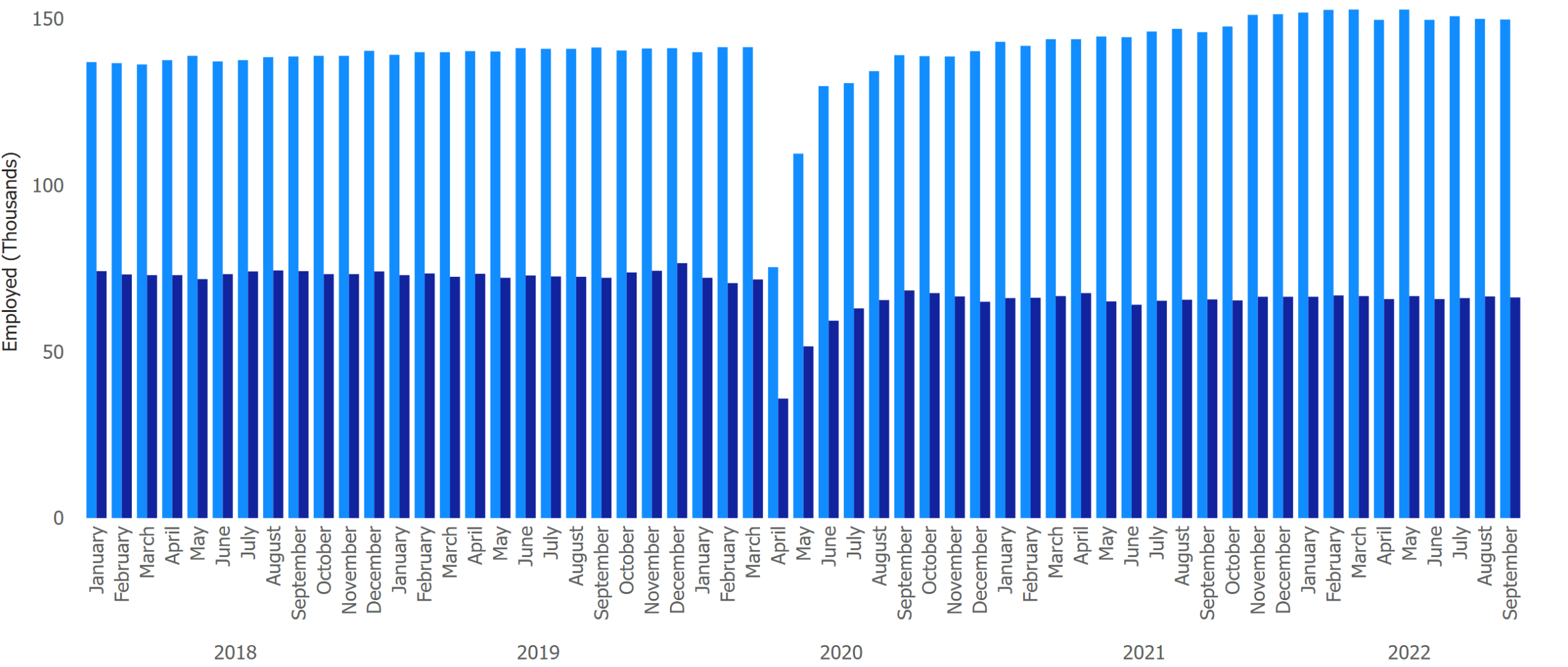
Reported Value, MoM% Change and YoY% Change by Year, Month and Industry

Medical and diagnostic laboratories MoM% Change YoY% Change

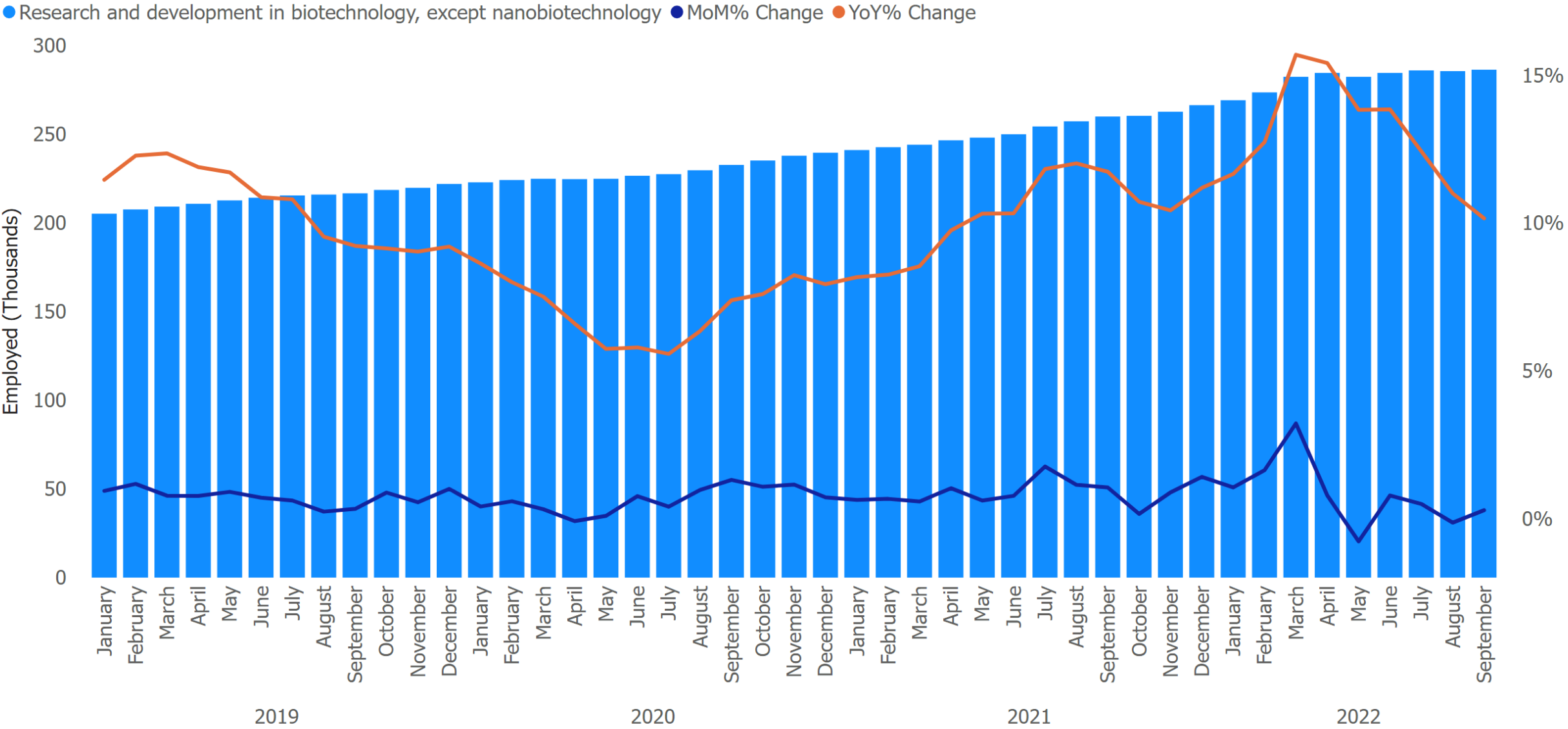


# Health Care Employment | Optometrist

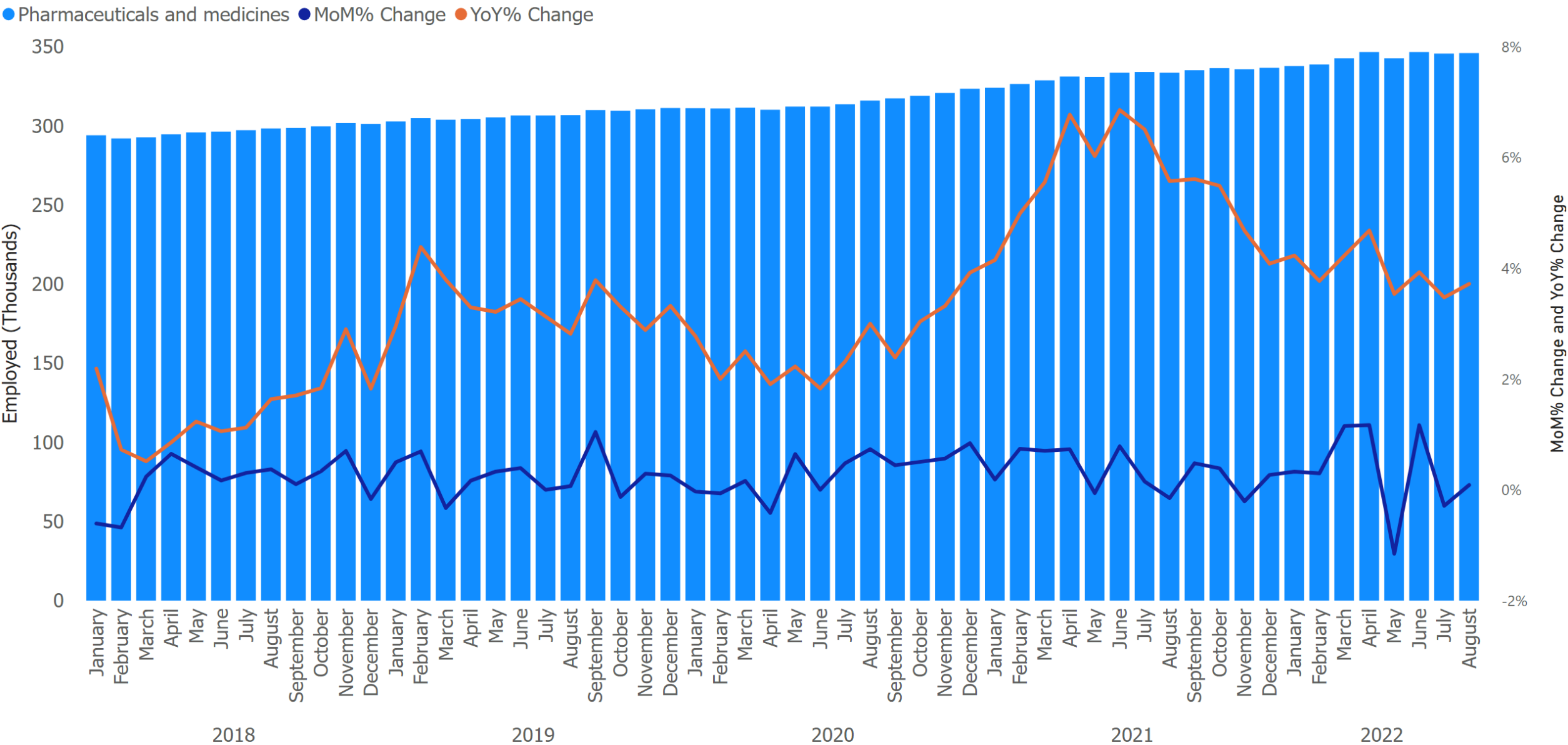
● Offices of optometrists ● Optical goods stores



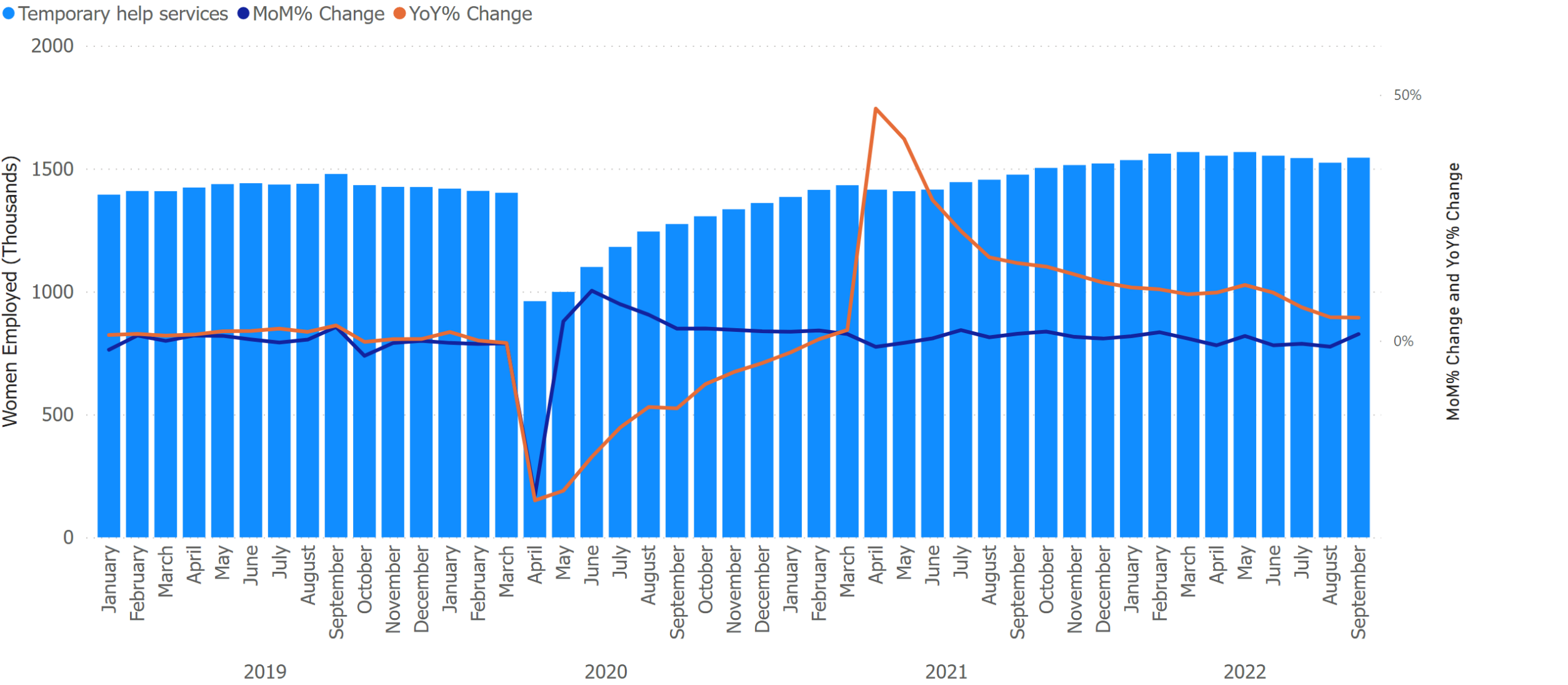
# Health Care Employment | Biotech Research



# Health Care Employment | Pharmaceutical and Medicines Manufacturing

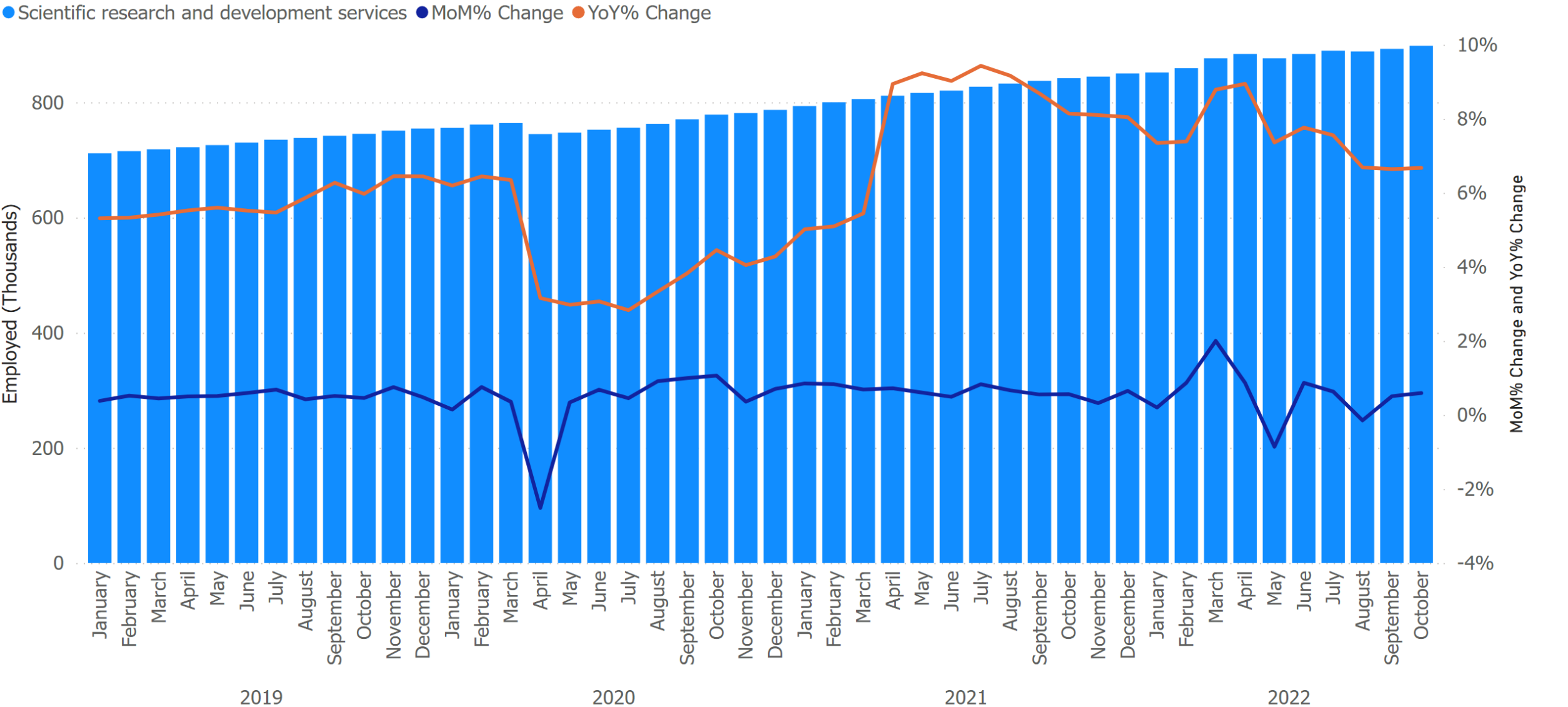


# All Sectors | Temporary Help Services

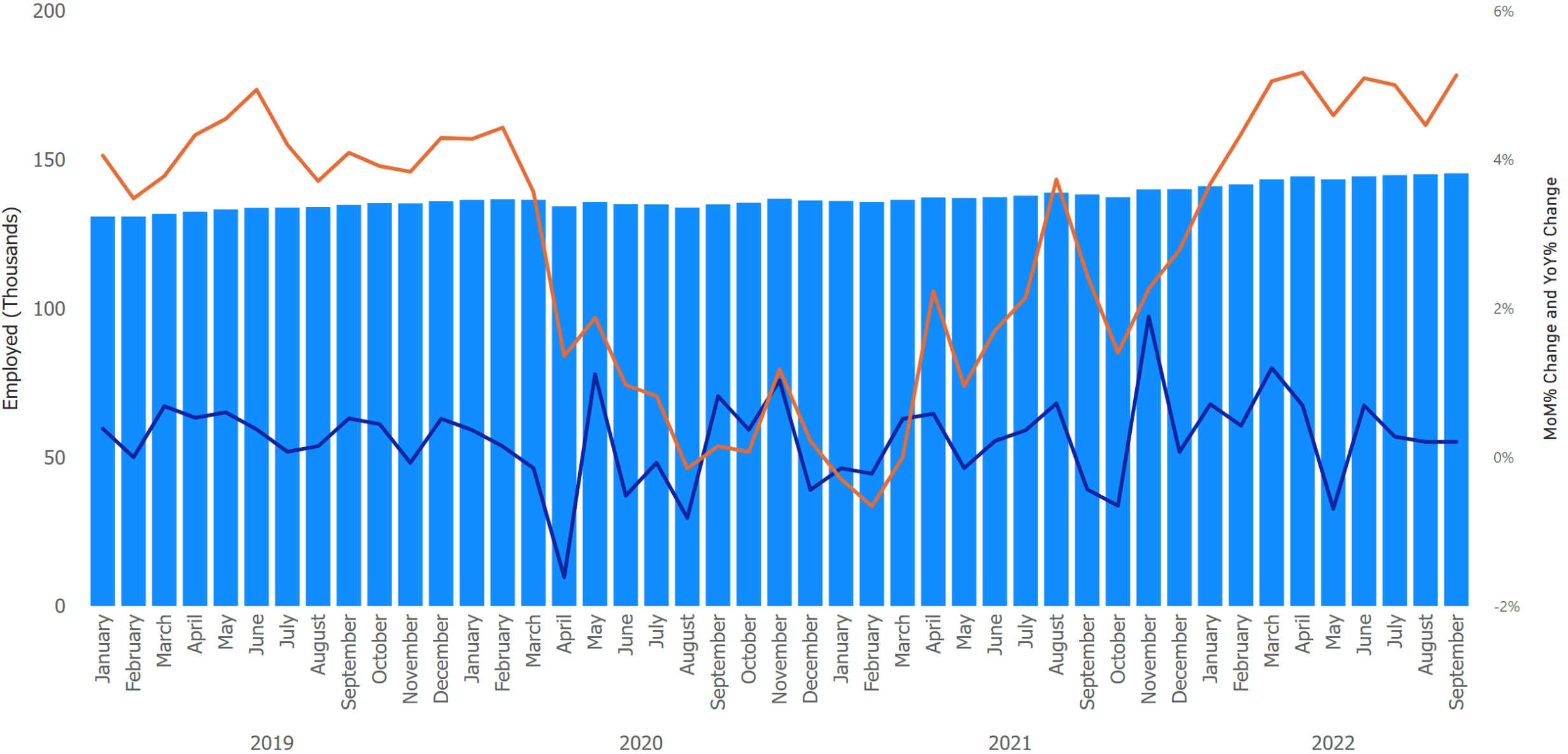




# Research Employed | Scientific Research and Development Services

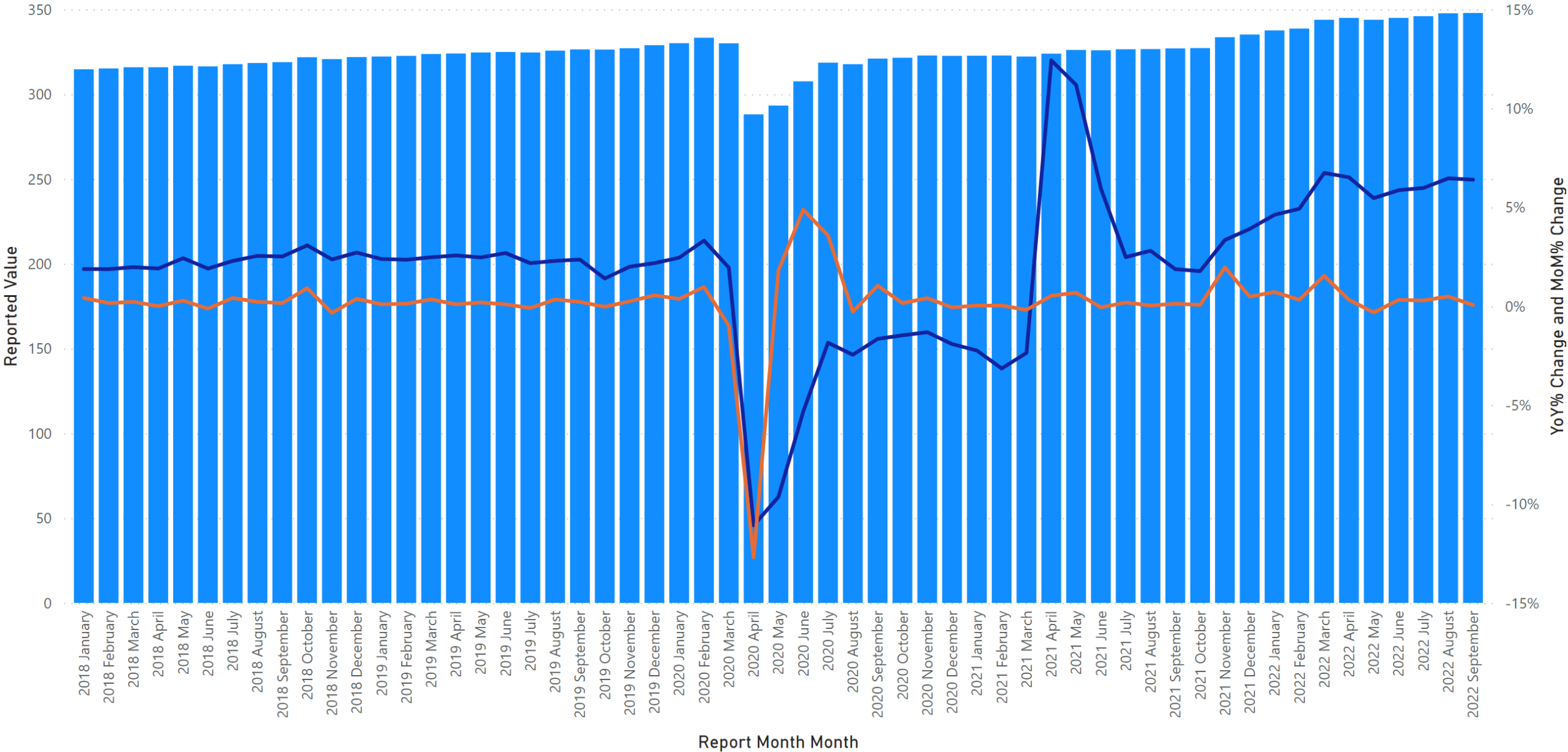


Industry Surgical and medical instruments MoM% Change YoY% Change



Medical Equipment and Supplies

Series Title All employees, thousands YoY% Change MoM% Change



# Overtime - Medical Equipment and Supplies Manufacturing

● AVERAGE WEEKLY OVERTIME HOURS OF ALL EMPLOYEES ● AVERAGE WEEKLY OVERTIME HOURS OF PRODUCTION AND NONSUPERVISORY EMPLOYEES

